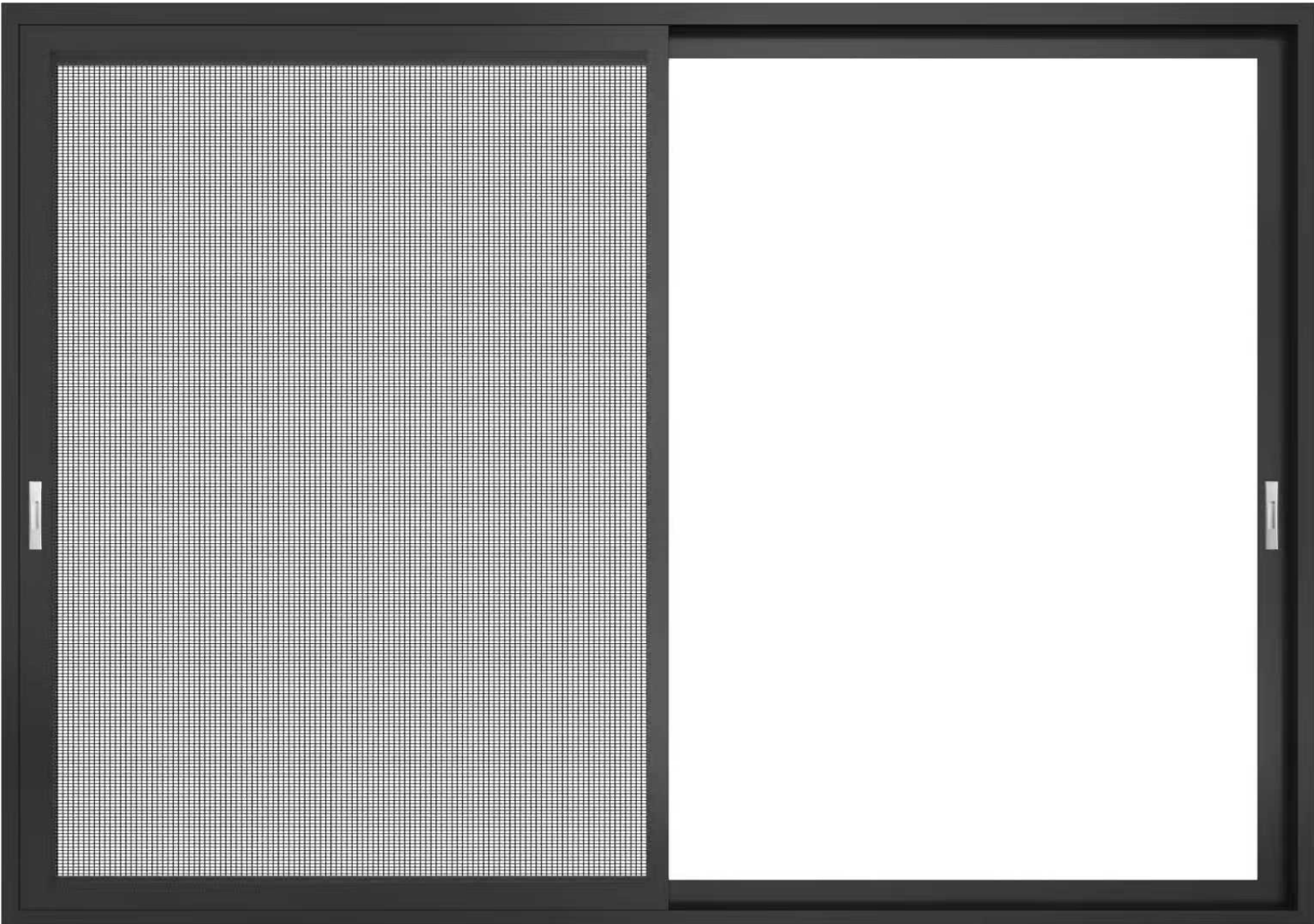


# TEZA 156 series sliding door



Designed for residential and commercial use, the TEZA 156 series delivers durable, smooth sliding in customizable 2-to-6 panel configurations, featuring pocket options, high tracks, heavy-duty rollers, a secure 2-point lock, and kingkong mesh

## Product Overview

The **156 Series Sliding Door** is a premium choice for modern living and commercial spaces, designed with a thermal break to provide excellent insulation and energy efficiency in any climate. Its powder-coated finish offers a sleek, durable look, while the slim frame enhances the aesthetic appeal without compromising strength. With options for high and low tracks, this door accommodates various installation preferences. Featuring Low-E2 tempered glass, the 156 Series Sliding Door ensures superior energy performance and safety. Its waterproof and airtight design keeps the elements at bay, while heavy-duty wheels ensure smooth operation. The flushed handle adds a touch of elegance, and the durable screen provides long-lasting protection against insects, making this sliding door a perfect blend of style, functionality, and durability. These doors feature a 6.1" (155mm) frame depth and are available in **panel widths ranging from 33" to 72" and heights from 71" to 120"**. **Each configuration can accommodate up to 5 panels.**

## 156 Series Sliding Door Comparison Table

Feature	156 Series Sliding Door
Design Type	Traditional Sliding Door
Track Options	2" High Track or 1" Low Track
Panel Configurations	2 to 5 Panels
Locking System	2-Point Locking System
Rollers	High-Quality Rollers
Screen Option	Retractable (after 2 panels)
Maximum Height	120"
Maximum Panel Width	72"
Thermal and Sound Insulation	Yes
Thermal Broken Aluminum	Yes
Seaside Option	Yes
Double and Triple Pane Glass	Yes
Corner Option	No
Low Threshold Option	Yes
Child Finger-Safe Design	Yes
Slim Profile (Glass Spacing)	5 1/4"
Bottom Weighted System	Yes
Easy-Clean Threshold	Yes
Outside Opening Option	Yes
Weather Resistance	Hot/cold climates and rainproof
Price	\$\$\$

## 156 Series Sliding Door

The **TEZA 156 Series Sliding Door** is ideal for large openings, offering smooth operation with high-quality rollers and a 2-point locking system for enhanced security. It comes with a washable, heavy-duty screen, which can be upgraded to a retractable screen after two panels. This door is adaptable to different track types (2-inch high track or 1-inch low track) and is perfect for environments that require high durability, even in extreme weather conditions.

### Energy Efficiency

Glass can be clear or customized with coatings like Low E2 and Low E4 to enhance energy efficiency and comfort. These Low-E coatings reflect infrared heat, helping keep interiors cooler in summer and warmer in winter, while still transmitting visible light. They also improve insulation and reduce UV rays that can fade furniture. When combined with thermally broken aluminum frames, which provide additional insulation, these features significantly improve the thermal performance of windows and doors, resulting in increased energy savings, lasting comfort, and added value for both residential and commercial spaces.

### Performance Chart

Frame Material	<b>Aluminum 6063-TS</b>
Frame Thickness	<b>1.72mm DSLS115ZB-02A</b>
U-Factor	<b>0.30</b>
Argon Fill	<b>90%</b>
Solar Heat Gain Coefficient	<b>0.23</b>
Visible Transmittance	<b>0.51</b>
Air Leakage	<b>0.30</b>
Sound Performance	<b>0.30</b>
Wind Load Resistance	<b>77 mph</b>

### Inspection Report

No.	Inspection Item	Unit Symbol	Standard Requirement	Inspection Result	Result
1	<b>Mg</b>	%	0.45-0.9	0.46	Qualified
2	<b>Si</b>	%	0.20-0.6	0.38	Qualified
3	<b>Fe</b>	%	≤0.35	0.16	Qualified
4	<b>Cu</b>	%	≤0.10	0.03	Qualified
5	<b>Zn</b>	%	≤0.10	0.03	Qualified
6	<b>Mn</b>	%	≤0.10	0.03	Qualified
7	<b>Cr</b>	%	≤0.10	0.02	Qualified
8	<b>Ti</b>	%	≤0.10	0.03	Qualified

## Glass Options

### Standard

#### **DUAL-PANE INSULATED GLASS (1/4" - 5mm/pane)**

This high-performance double glazing system features two glass panes separated by an argon-filled gap, significantly reducing heat transfer. This advanced insulation enhances energy efficiency, indoor comfort, and lowers energy costs, making it a smart choice for any building.

### Custom

#### **TRIPLE-PANE INSULATED GLASS (1/4" - 5mm/pane)**

TEZA's TRIPLE-PANE GLASS features an advanced multi-pane design, offering exceptional thermal insulation that significantly outperforms standard glass. The additional layers of glass, separated by argon-filled air gaps, minimize heat and cold transfer, helping maintain indoor temperatures for greater comfort and long-term energy savings. This system also enhances noise reduction, while providing increased security and durability against impacts and harsh weather conditions.

### Standard

#### **LOW-E2 GLASS (OFFLINE) (1/4" - 5mm/pane)**

TEZA's LOW-E2 GLASS is designed to minimize heat loss in winter and reduce heat gain in summer while maintaining excellent visibility and year-round energy efficiency. It adapts to various climates, blocking 85% of harmful UV rays and 65% of re-radiated solar heat, ensuring a comfortable and energy-efficient indoor environment.

### Custom

#### **LOW-E4 GLASS (OFFLINE) (1/4" - 5mm/pane)**

TEZA's LOW-E4 GLASS delivers exceptional energy efficiency by reflecting heat back into the home while blocking 90% of harmful UV rays and 72% of solar heat. Designed for superior insulation and solar control, it also provides better insulation than standard glass and enhances soundproofing, making it an ideal choice for various climates.

### Custom

#### **HIGH-ALTITUDE INSULATED GLASS (1/4" - 5mm/pane)**

TEZA's HIGH-ALTITUDE GLASS is specifically engineered for use in elevated areas above 2,000 feet. Instead of argon gas, it features integrated capillary tubes that equalize pressure between the glass panes, preventing issues like bowing and breakage caused by lower atmospheric pressure. This specialized design ensures durability, longevity, and optimal performance in high-altitude environments.

## Finishes and Colors

TEZA finishes include in-stock and designer selections, customizable to match nearly any color. Standard finishes feature powder-coated Cartier Black and Cartier White. TEZA's durable powder coating provides exceptional resistance to wear, scratches, and corrosion, ensuring long-lasting performance and aesthetic appeal.

### Color Choice



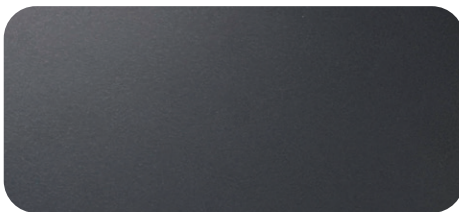
**Cartier Black**



**Cartier White**



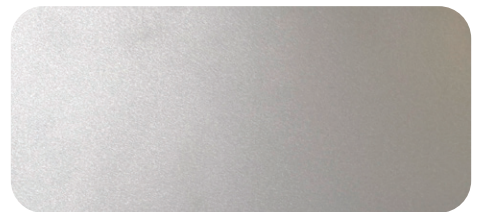
**White Oak**



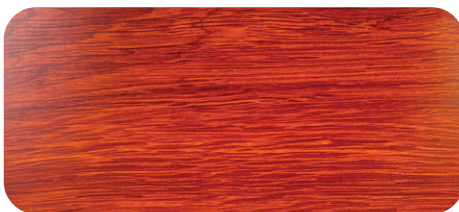
**Ferrero Gray**



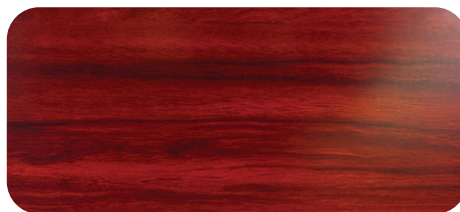
**Cartier Silver**



**Light Silver**



**Gold Oak**



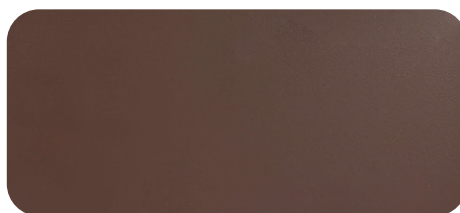
**Walnut Wood**



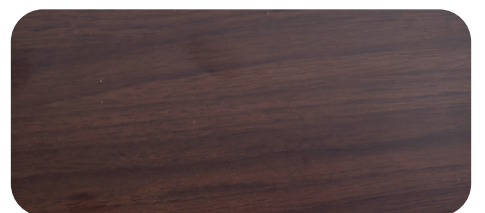
**Hainan Scented Rosewood**



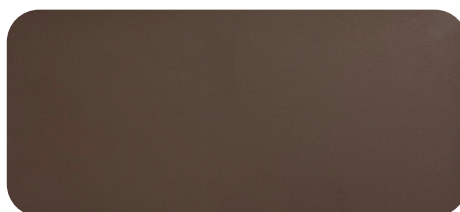
**Ash**



**Mocha Coffee**



**Indians Red Oak**



**Cartier Dark Coffee**

# 155 Sliding Doors Series Highlights



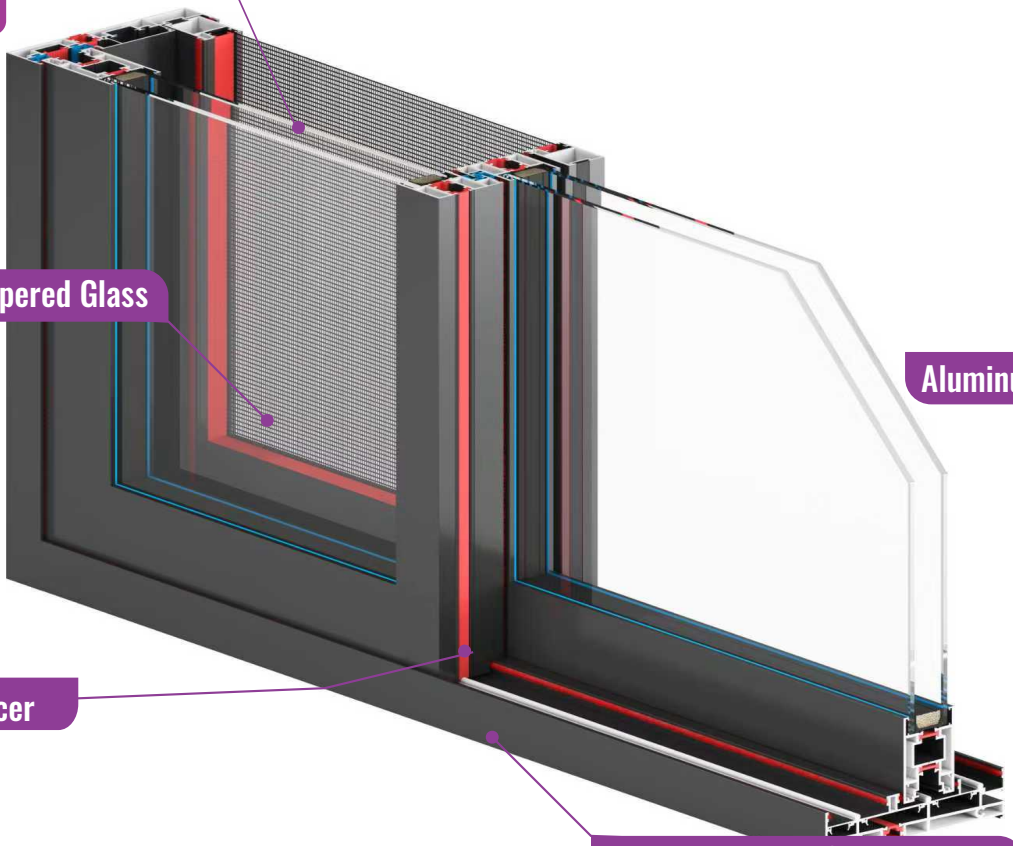
Double Pane Glass with Argon Gas

Low-E Tempered Glass

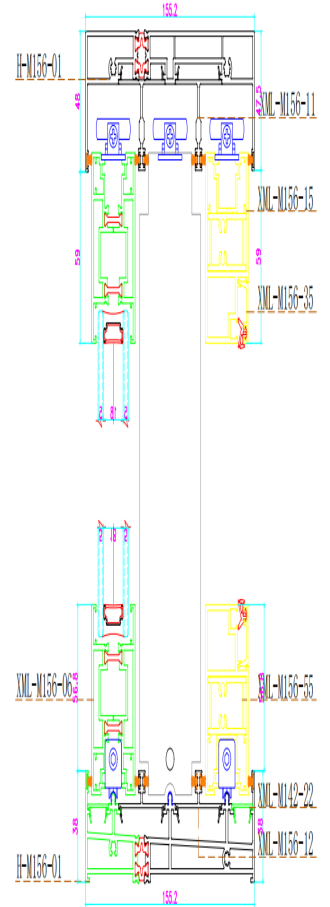
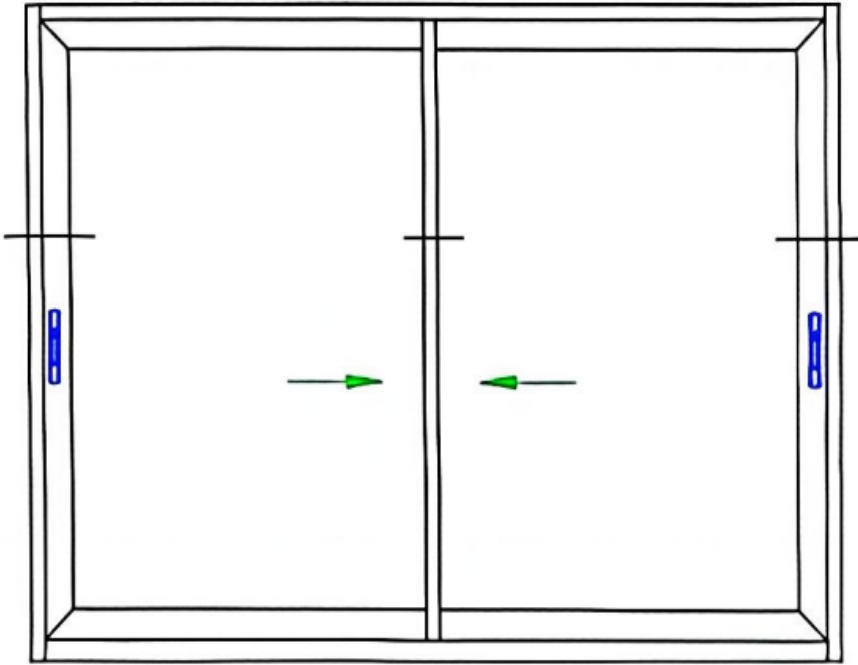
Aluminum Thermal Break

Polyamide Spacer

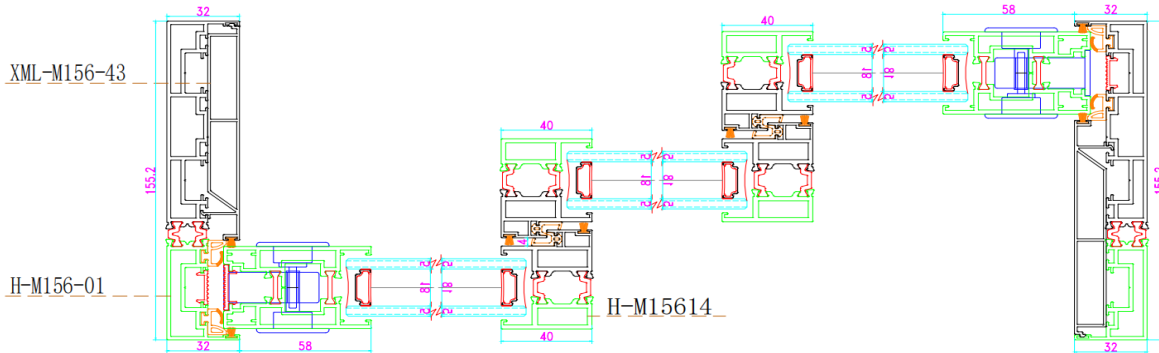
Durable Powder-Coated Finish



# 156 Series Sliding Door



close

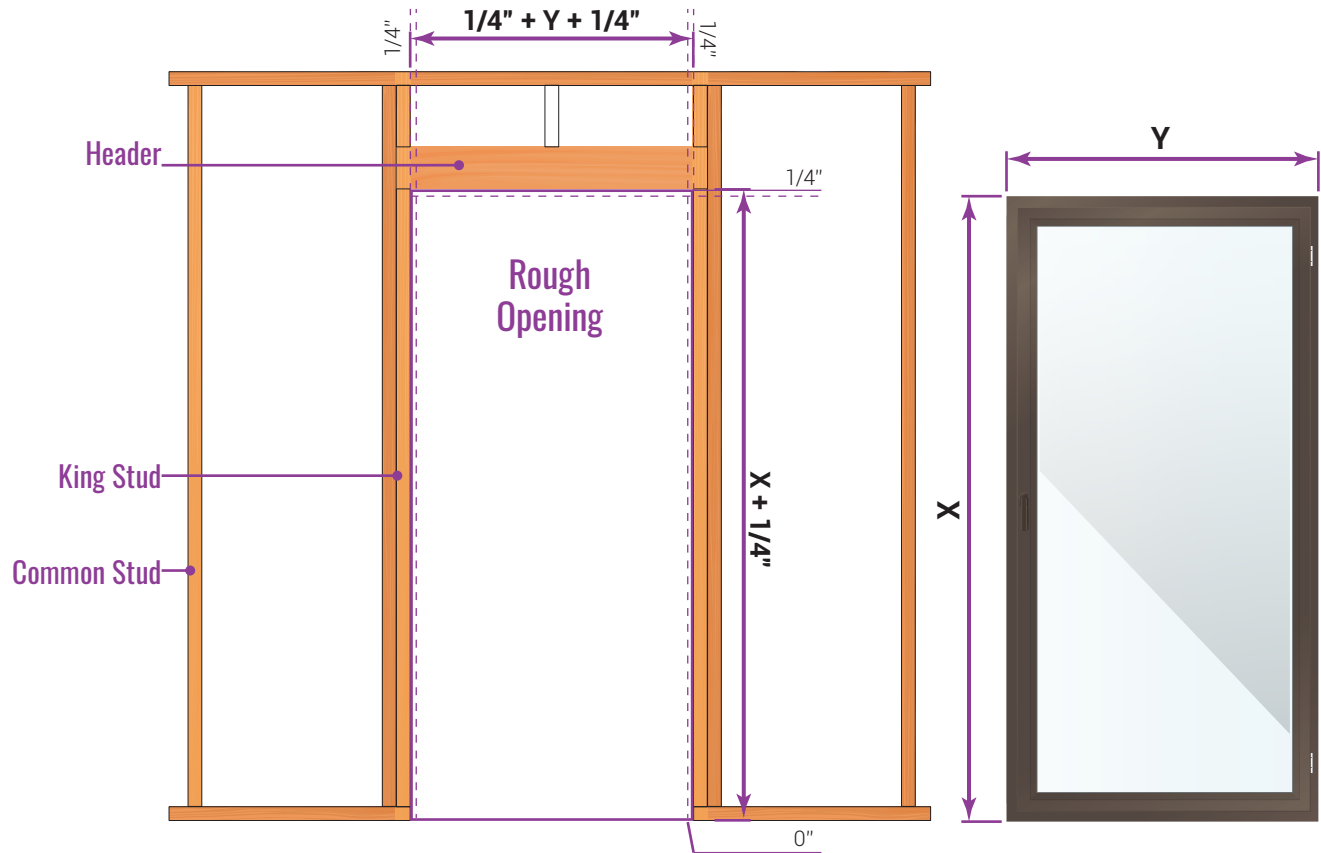


open

## Measurements and Rough Opening

TEZA products sizes its products from the frame to frame. The sizes on the invoice will be exact sizes of products. For rough opening requires 1/4" to each side (left, right and top).

Installation is the sole responsibility of the home owner, distributor user contractor, or their representative.



## Notes

- For rough opening size, allow a minimum 1/4" gap between the Door and rough opening.
- All dimensions are in mm or inches.
- All dimensions are to be checked on site.
- Any discrepancy between the architectural drawing and other drawings relevant for construction should be notified before commencement.
- Sill pans are required by code for doors and windows.



Teza's aluminum products are exceptionally recyclable. In fact, aluminum is one of the most recyclable materials on the planet, capable of being recycled repeatedly without losing its quality or integrity.



(818)818-6001



[sales@Tezadoors.com](mailto:sales@Tezadoors.com)



[www.Tezadoors.com](http://www.Tezadoors.com)



4943 Telegraph Rd  
Los Angeles, CA 90022