

TEZA 85 Series Hidden Hinge Bi-Fold Door



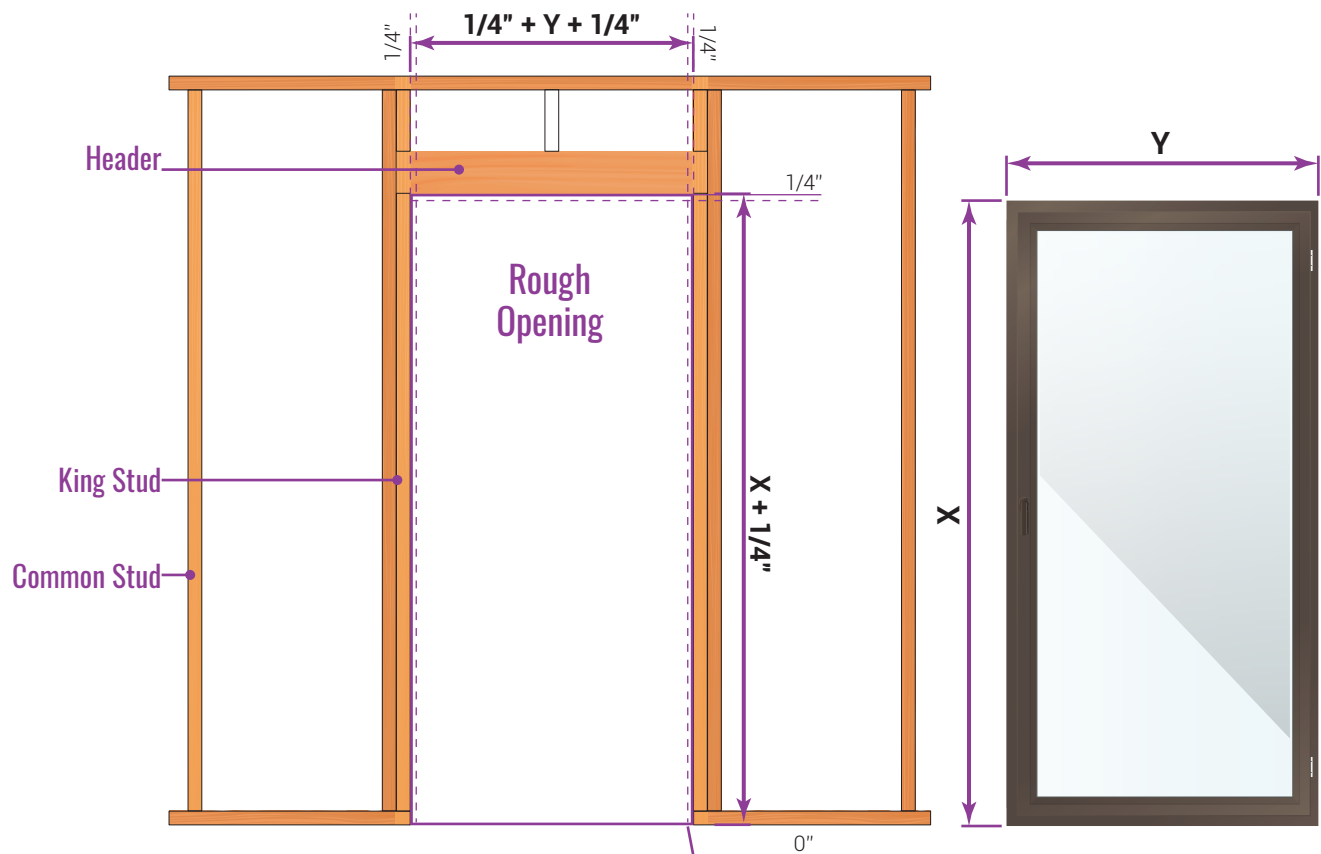
Installation Manual

1. Preparation of the Opening

Before starting, make sure the installation area is ready:

- The rough opening must be $\frac{1}{2}$ **inch** wider and taller than the overall frame size.
- Verify that the **floor is level** across the full width.
- Apply a continuous **waterproofing sealant** around the sill area.
- **Clean the opening** and remove any debris or uneven material.

Tip: Proper preparation ensures smooth installation and long-term performance.



2. Frame Assembly

Step 1:

Identify and match the frame pieces using their letter markings:
T – Top Frame | B – Bottom Track | L – Left Side | R – Right Side
 The label side or marking should face inside the door opening.

IN /R ↑

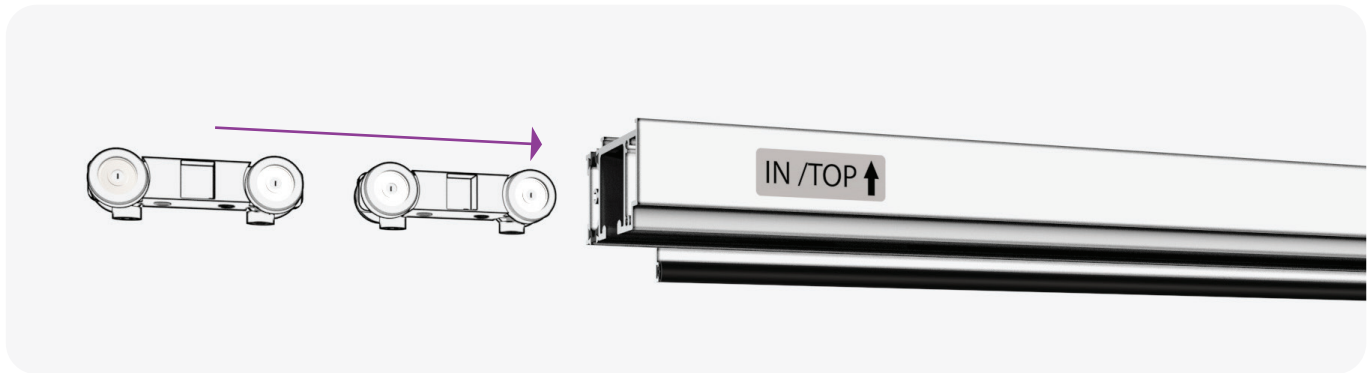
IN /L ↑

IN /TOP ↑

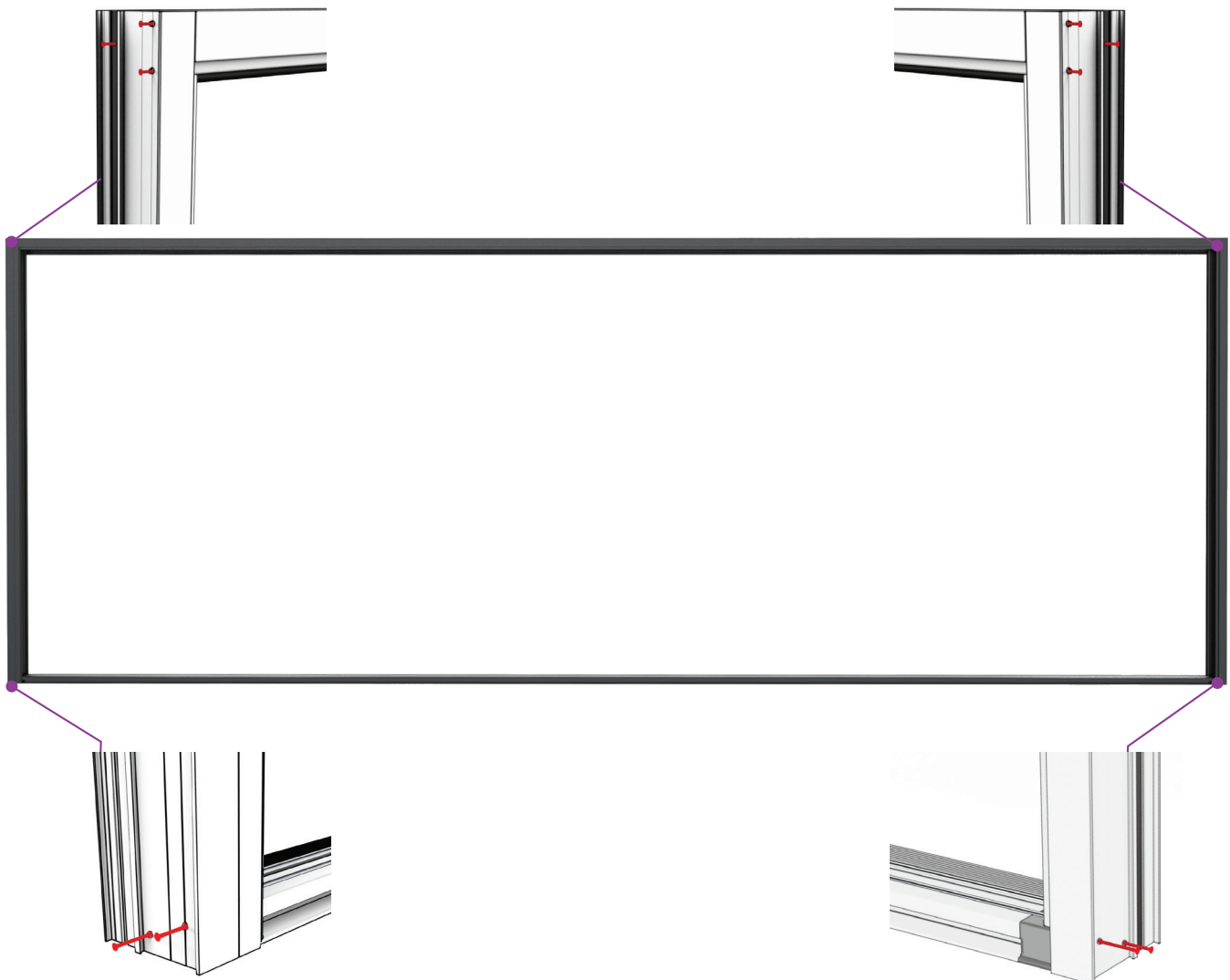


Step 2:

Insert the rollers into the top track slot before connecting the side frames.

**Step 3:**

Tighten all screws evenly until no gaps remain between the frame pieces.



4. Frame Installation

Step 1:

Apply construction adhesive under the bottom track for strong adhesion and waterproofing.

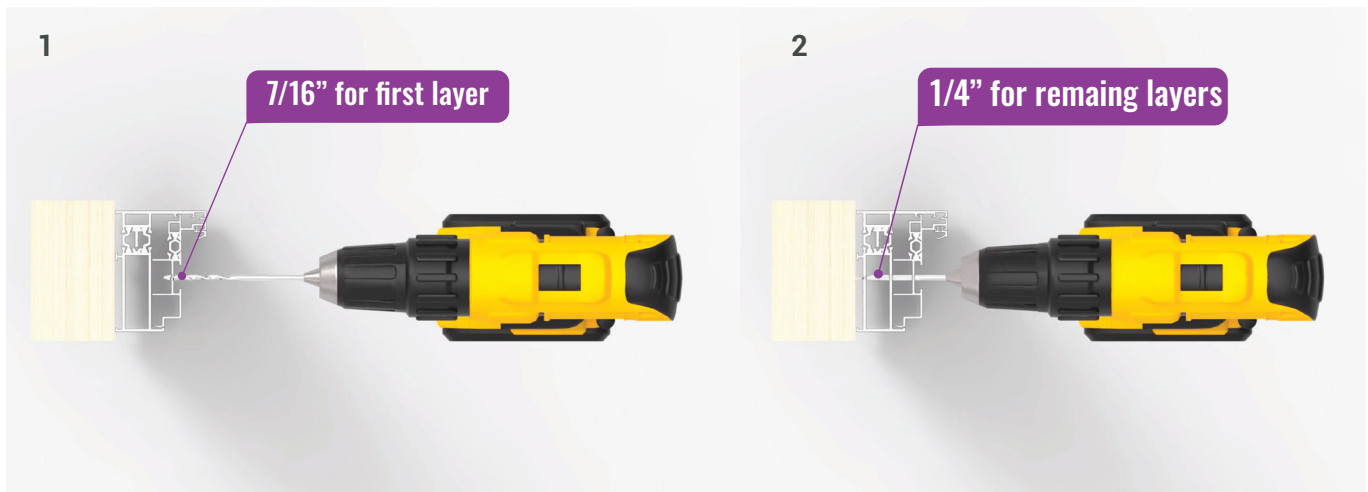
Step 2:

Drill the installation holes:

Side frames: 3–4 holes (6" from top and bottom, spaced evenly)

Top frame: 3–4 holes spaced evenly across

Hole size: **7/16"** for cap side (first layer), **1/4"** for remaining layers

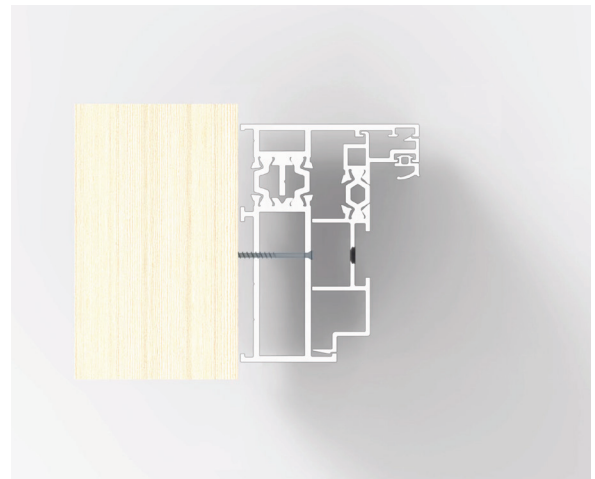


Step 3:

Secure the frame to the opening using the provided screws. Check for level after tightening.

Step 4:

Cover all visible holes with plastic caps for a clean finish.



5. Door Panel Installation

Step 1 – First Panel:

Locate Panel #1 Attach it to the frame using hinge hinge screws.



Step 2 – Second Panel:

Locate Panel #2, the one with 2 connector on both side of panel. Place Panel #2 by positioning the bottom wheel onto the track first. Then, insert and secure the top guide (roller) inside the top frame connector.

Once aligned, connect Panel #2 to Panel #1 using the hinge screws.

Tighten evenly to ensure smooth panel movement and correct alignment



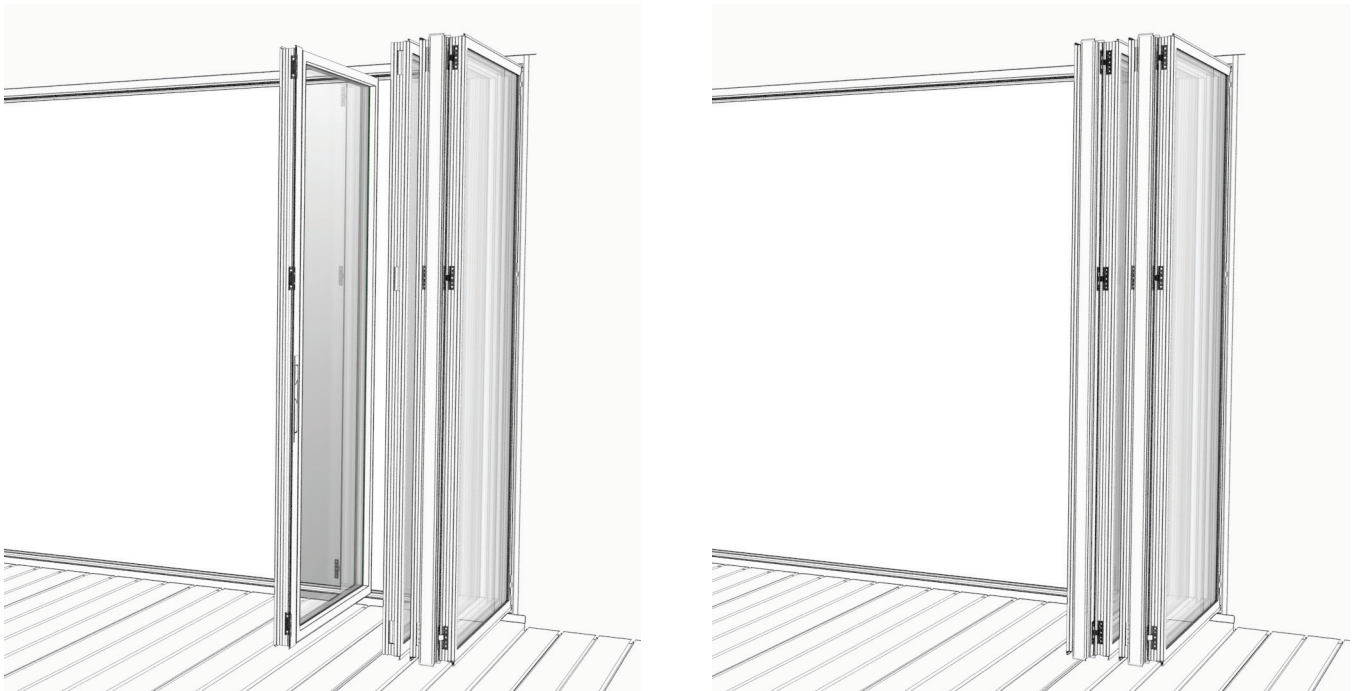
Step 3 – Third Panel:

Connect Panel #3 to Panel #2 using hinge screws.



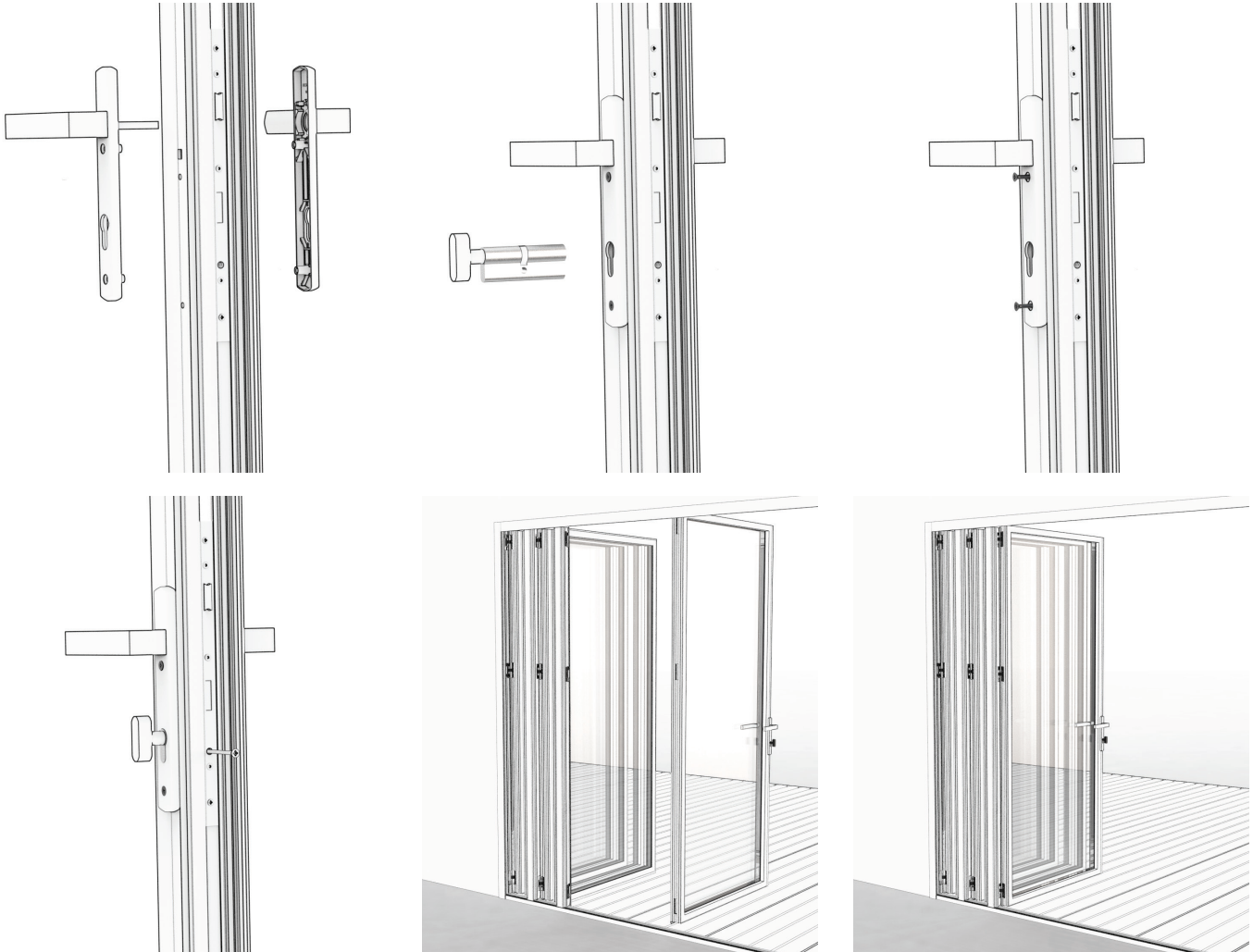
Step 4 – Fourth Panel (if applicable):

Attach Panel #4 to the other side of the frame using hinge screws.



6. Hardware Installation

Install the main handle on the locking panel.



7. Final Adjustments

Attach Panel #4 (main lock panel) to the other side of the frame using hinge screws.

Final Adjustments

Open and close the door several times to ensure smooth operation.
 Check all hinge connections and wheel alignment.
 Confirm that the frame remains square and level.
 Clean the surface and remove any protective film.



4943 Telegraph Rd
 Los Angeles, CA 90022



www.Tezadoors.com



sales@Tezadoors.com



(818)818-6001

