

# Teza 88 Series Folding Door



Explore a world of possibilities with Teza Doors and Windows, where we don't just open doors, we create entrances to a better living. Welcome home.



**Teza's 88 Series Bifold Door**, also known as a folding patio door, is designed for exterior use, offering a seamless transition between indoor and outdoor living spaces.

## Product Overview

The Teza Doors 88 Series Bi-Fold Door features a sleek, slim design with a maximum height of 8 feet, ideal for creating expansive views in your home. Equipped with bottom wheels for smooth operation and adjustable hinges for precise alignment, this door combines functionality with elegance. The latest weather stripping ensures superior protection against the elements, making it a practical choice for enhancing your living space.

Designed with a 2 7⁄8" (73mm) frame depth, the 88 Series Bi-Fold Door includes an alumina thermal break system for excellent insulation. This door is available in customizable widths from 26" to 40" and heights from 80" to 96" for each panel, allowing for a perfect fit in any setting. Its combination of advanced features and stylish design makes it a standout addition to any home, offering both aesthetic appeal and practical benefits.

## Energy Efficiency

Glass can be customized with various coatings, including Low E2, Low E4, and clear glass, to enhance privacy, protection, and thermal efficiency. These options let you choose the best fit for your needs, whether maximizing energy savings or improving comfort. The thermally broken aluminum frame adds an insulating barrier that significantly boosts energy performance, maintaining a consistent indoor temperature and reducing energy consumption. By combining customizable glass options with thermally efficient frames, our windows deliver superior performance and long-term benefits for your home or commercial space.

## Performance Chart

Frame Material	Aluminum 6063-TS
Frame Thickness	1.72mm DSLS115ZB-02A
U-Factor	0.30
Argon Fill	90%
Solar Heat Gain Coefficient	0.23
Visible Transmittance	0.51
Air Leakage	0.30
Sound Performance	0.30
Wind Load Resistance	77 mph

Glass Type	U-Factor How well a product prevents heat from escaping.	Solar Heat Gain Coefficient How well a product blocks heat caused by sunlight.	Visible Light Transmittance How much visible light comes through a product.	UV Protection How well a product blocks ultraviolet rays.
Insulation Glass (Online)	★★★★☆	★★★★☆	★★★★☆	★★★★☆
Low-E 2 Glass (Offline)	★★★★☆	★★★★☆	★★★★☆	★★★★☆
Low-E 4 Glass (Offline)	★★★★★	★★★★☆	★★★★☆	★★★★☆
Triple Panel Glass	★★★★★	★★★★★	★★★★★	★★★★★

## Glass Options

### -Clear Glass (1/4" - 5mm)

Clear glass offers transparency and excellent visibility, allowing natural light to flood interior spaces.

### -Insulation Glass (Online) (1/4" - 5mm)

This glass integrates low emissivity (low-e) properties directly into its composition, enhancing performance and durability. It provides superior thermal insulation benefits.

### -Low-E 2 Glass (Offline) (1/4" - 5mm)

Teza's Low-E3 Glass is designed to reject solar heat while maintaining visibility and offering exceptional fading protection. It adapts to various climates and blocks 85% of harmful UV rays.

### -Low-E 4 Glass (Offline) (1/4" - 5mm)

Teza Low-E4 Glass offers enhanced light transmittance combined with superior solar control. It reflects heat back into the home in winter and blocks 90% of solar heat. It includes 20% more tint visibility than standard glass.

### -Triple Panel Glass (1/4" - 5mm)

Each pane of glass is separated by an air gap, enhancing sound absorption and blocking sound transmission. This design reduces outside noise infiltration into interior spaces.

Dual Insulating Glass Construction	STC	OITC*	Frequency (Hz)															
			100	125	160	200	250	315	400	500	630	800	1000	1250	1600	2000	2500	3150
			Sound Transmission Loss ( dB)															
1" overall- ¼", glass, ½", airspace, ¼" glass	35	30	27	24	29	22	22	25	30	33	35	35	38	40	42	37	37	43
1" overall- ¼", glass, ½", airspace, ¼" glass	38	31	27	23	28	21	27	29	34	35	37	37	41	43	45	44	39	46
Triple Insulating Glass Construction	STC	OITC*	Frequency (Hz)															
			100	125	160	200	250	315	400	500	630	800	1000	1250	1600	2000	2500	3150
			Sound Transmission Loss ( dB)															
1- ¾" overall – ¼" glass, ½" airspace, ¼" glass, ½" airspace, ¼" glass	39	31	25	22	29	24	25	29	34	37	40	40	43	46	48	47	41	47
2- ¾" overall – 3/8" glass, ¾" airspace, 5/16" glass, ¾" airspace, 1/4" glass, 0.60" PVB, ¼" glass	45	35	33	30	34	37	39	43	44	45	46	46	43	41	43	49	55	57

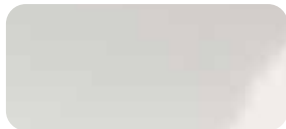
## Finishes and Colors

Our finishes come in both in-stock and designer selections, and can be customized to match almost any color. Standard options include Bronze Anodized and Satin Anodized, featuring a Class 1 coating thickness for enhanced smoothness and durability. Our designer colors boast a high-quality paint finish that meets the AAMA-2605 rating, the highest standard for organic finishes.

### Color Choice



**Cartier Black**



**Cartier White**



**White Oak**



**Cartier Silver**



**Ash**



**Hainan Scented  
Rosewood**



**Gold Oak**



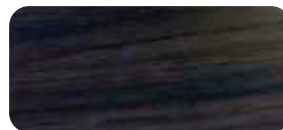
**Walnut Wood**



**Mocha Coffee**



**Cartier Dark Coffee**



**Indians Red Oak**

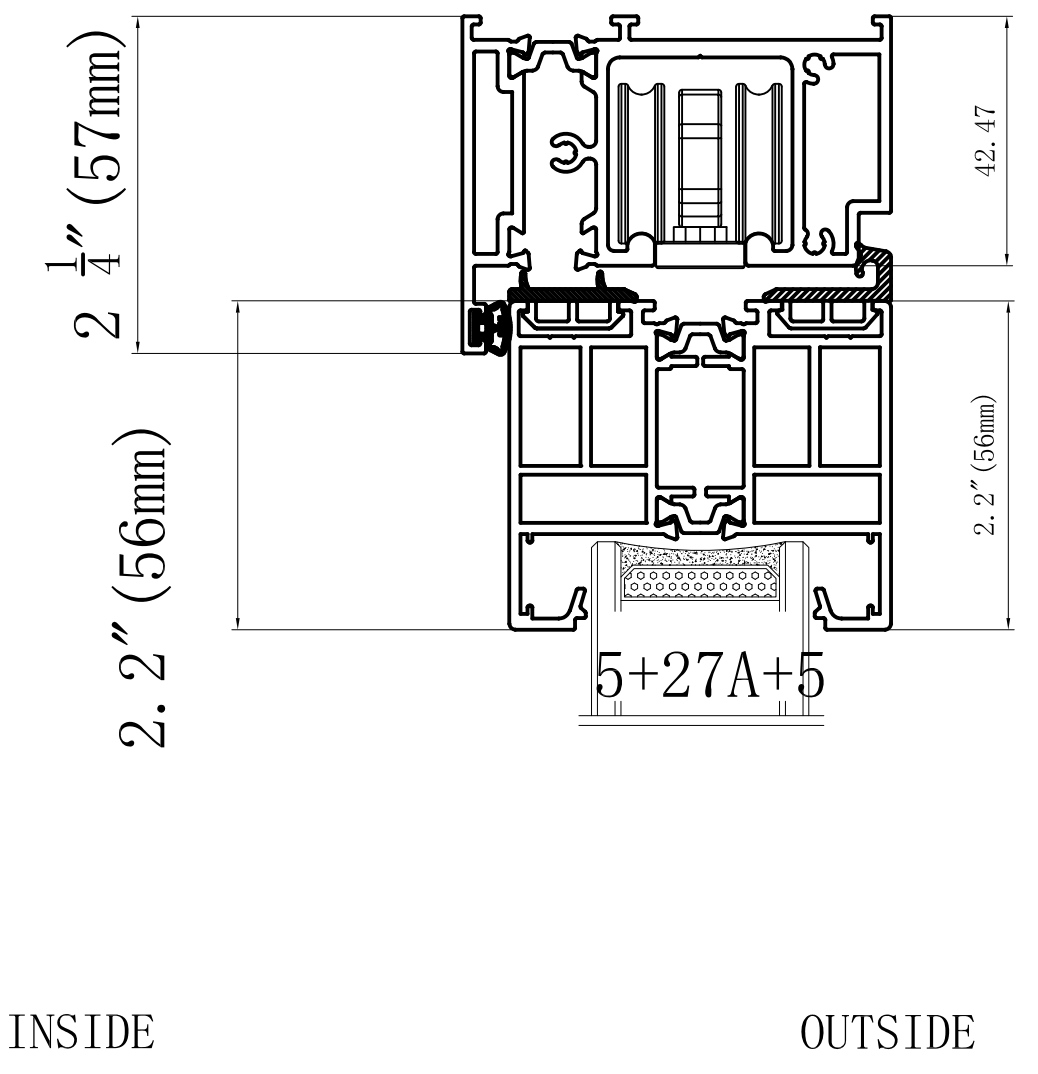
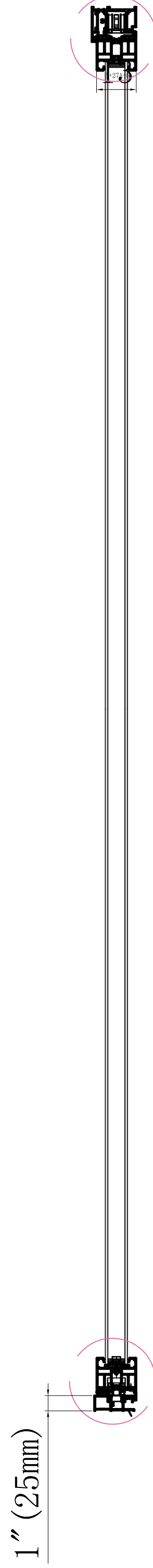
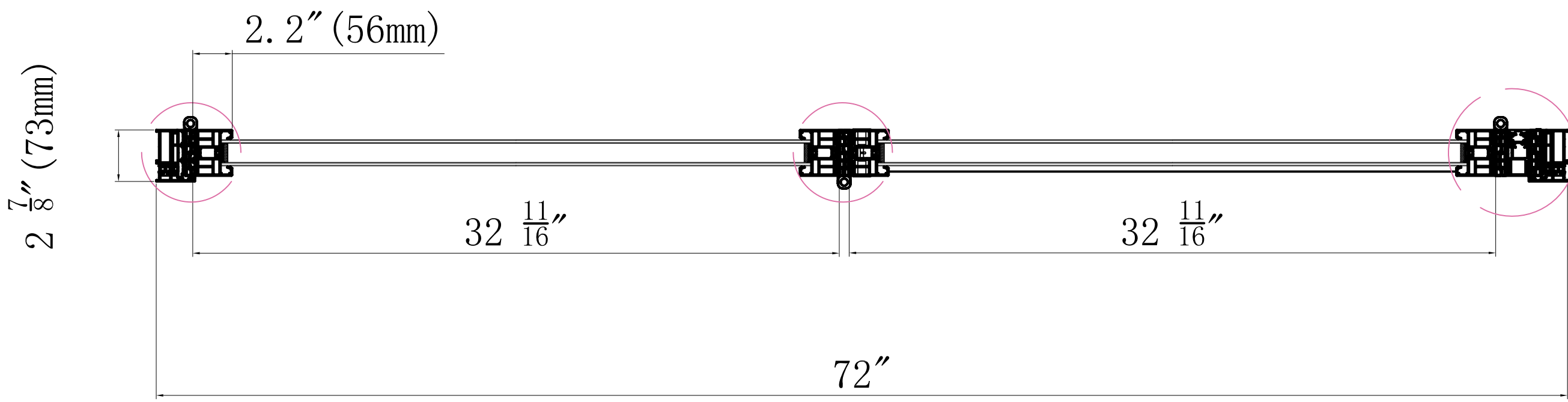
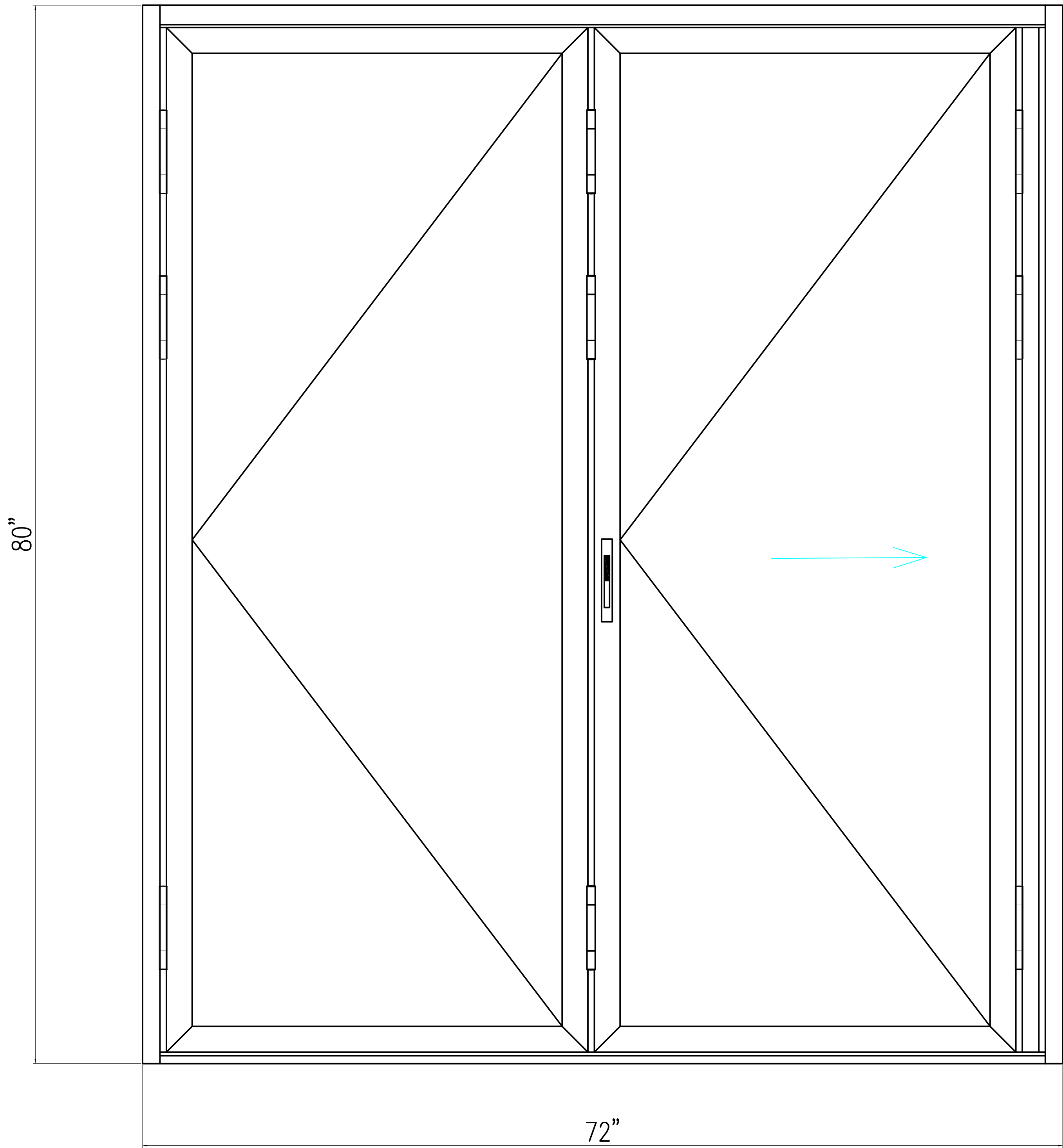


**Ferrero Gray**

### Grille Options

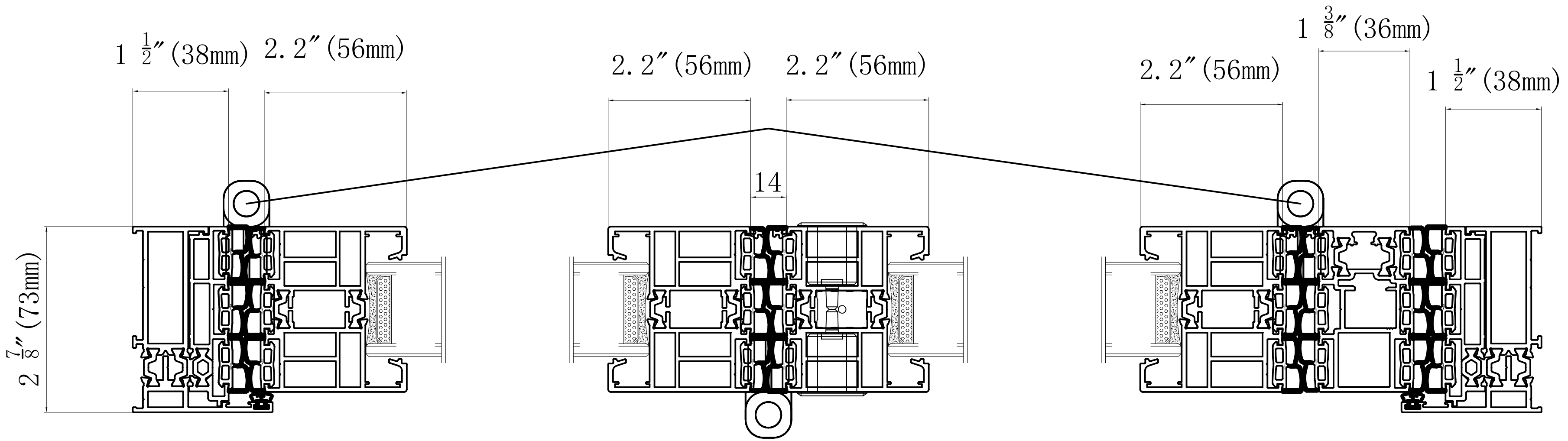
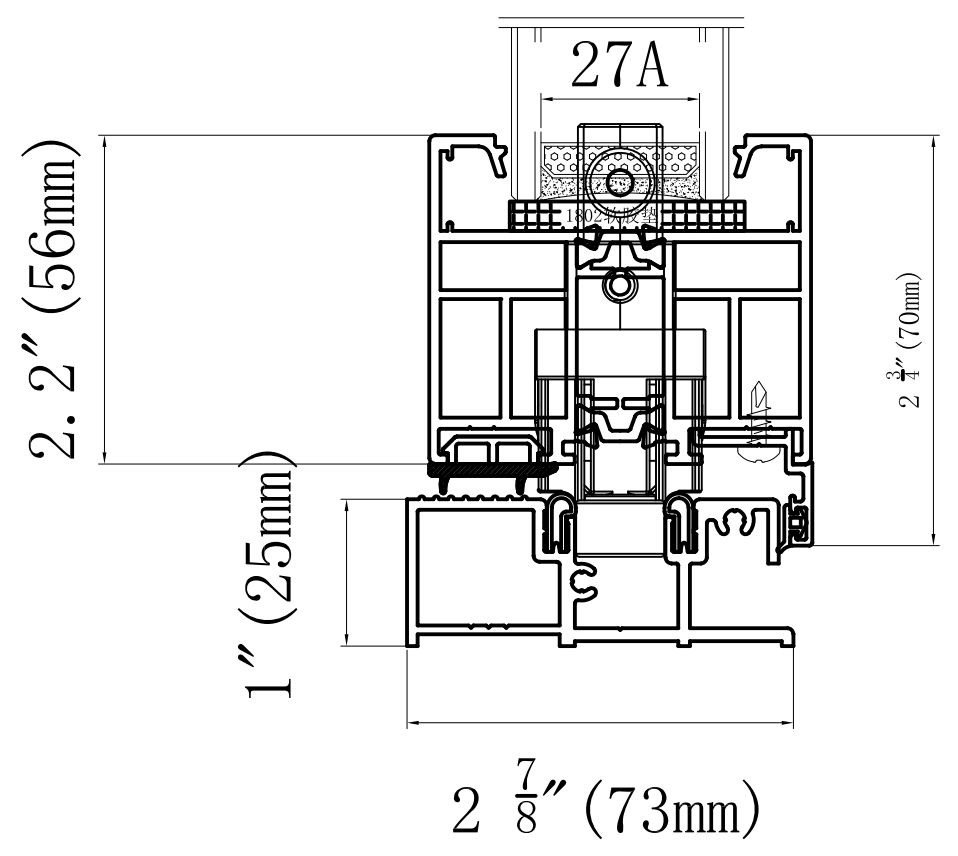
<b>Sizes</b>	10mm*15.6mm, 35mm*24.5mm, 14.8mm*26mm, 12mm*20mm, 10mm*19mm, 10mm*15mm
<b>Style</b>	Full Divided Light, Simulated Divided Light, Convenient Cleaning Options
<b>Permanent Exterior Permanent Interior with Spacer</b>	<b>Full Divided Light</b> An authentic look with full divided light grilles that are permanently applied to the interior and exterior of your patio door with spacer between the glass.
<b>Permanent Exterior Permanent Interior</b>	<b>Simulated Divided Light</b> Simulated divided light offers permanent grilles on the exterior and interior with no spacer between the glass.
<b>Permanent Exterior Removable Interior</b>	
<b>Removable Interior Grille</b>	<b>Convenient Cleaning Options</b> Removable interior grilles are easy to detach for cleaning. They are installed between the glass panels and come with a contoured profile of either 1" or ¾".
<b>FineLight Grilles Between the Glass</b>	



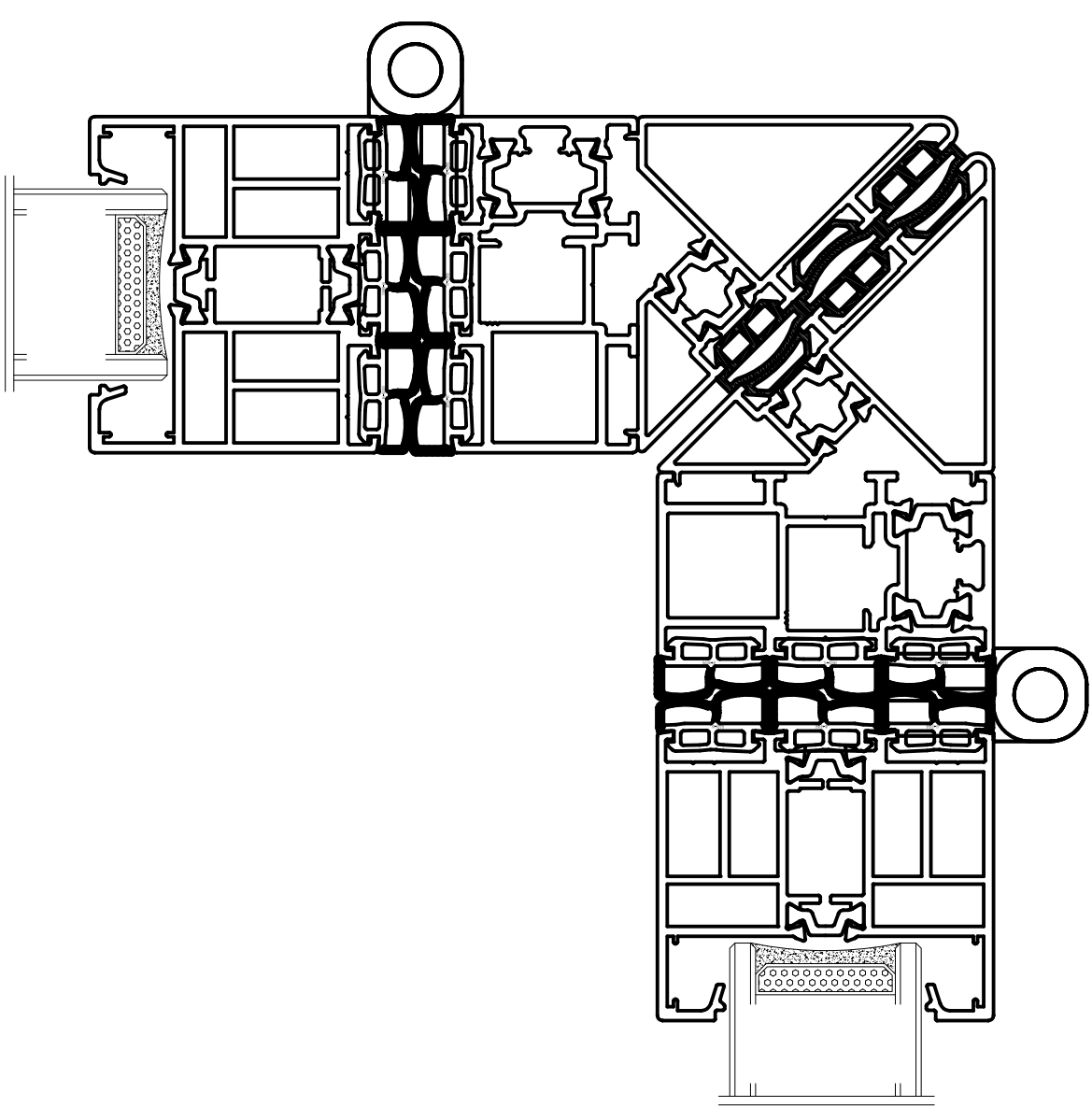
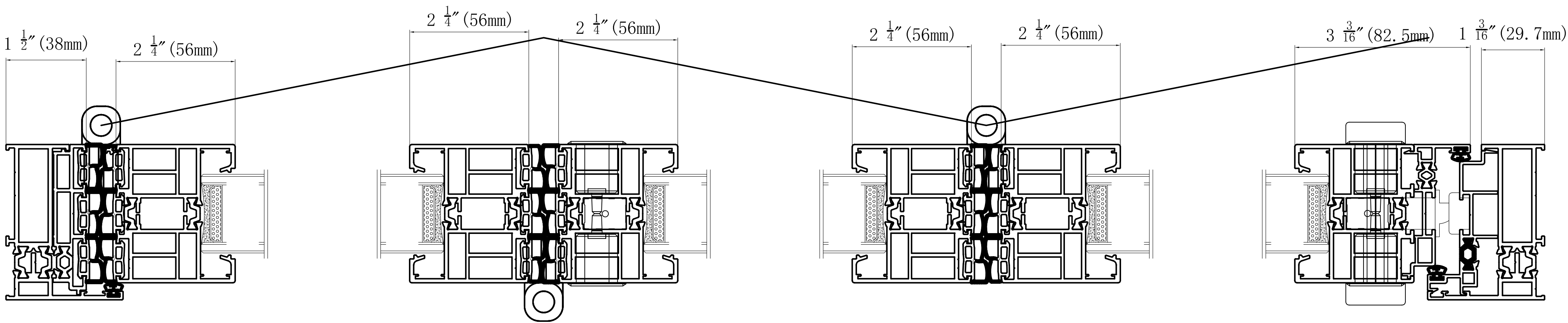
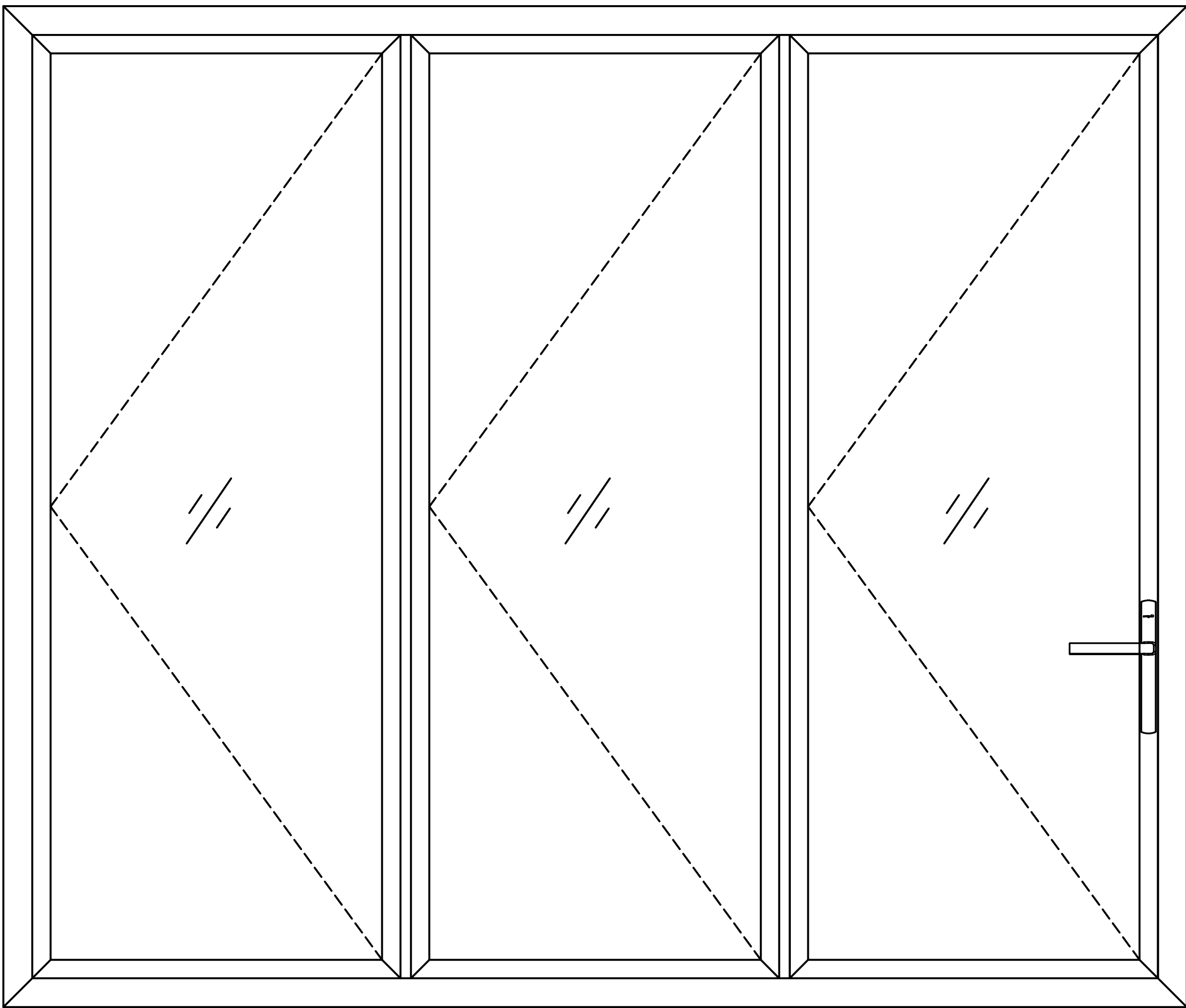


INSIDE

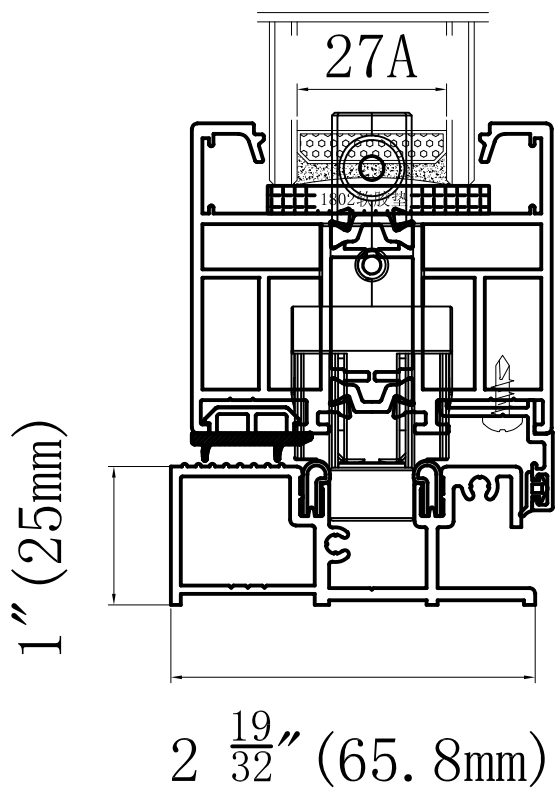
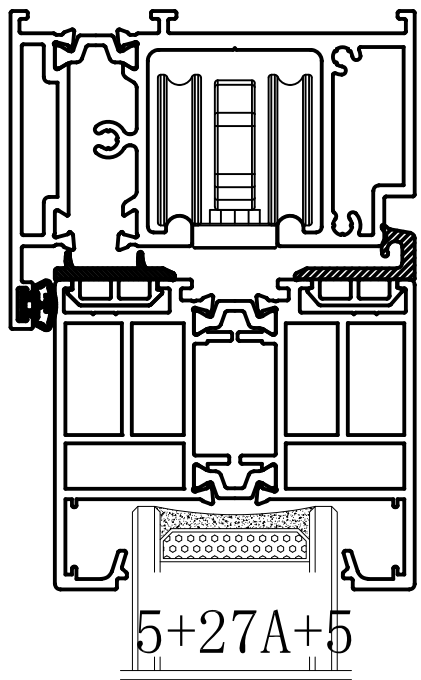
OUTSIDE

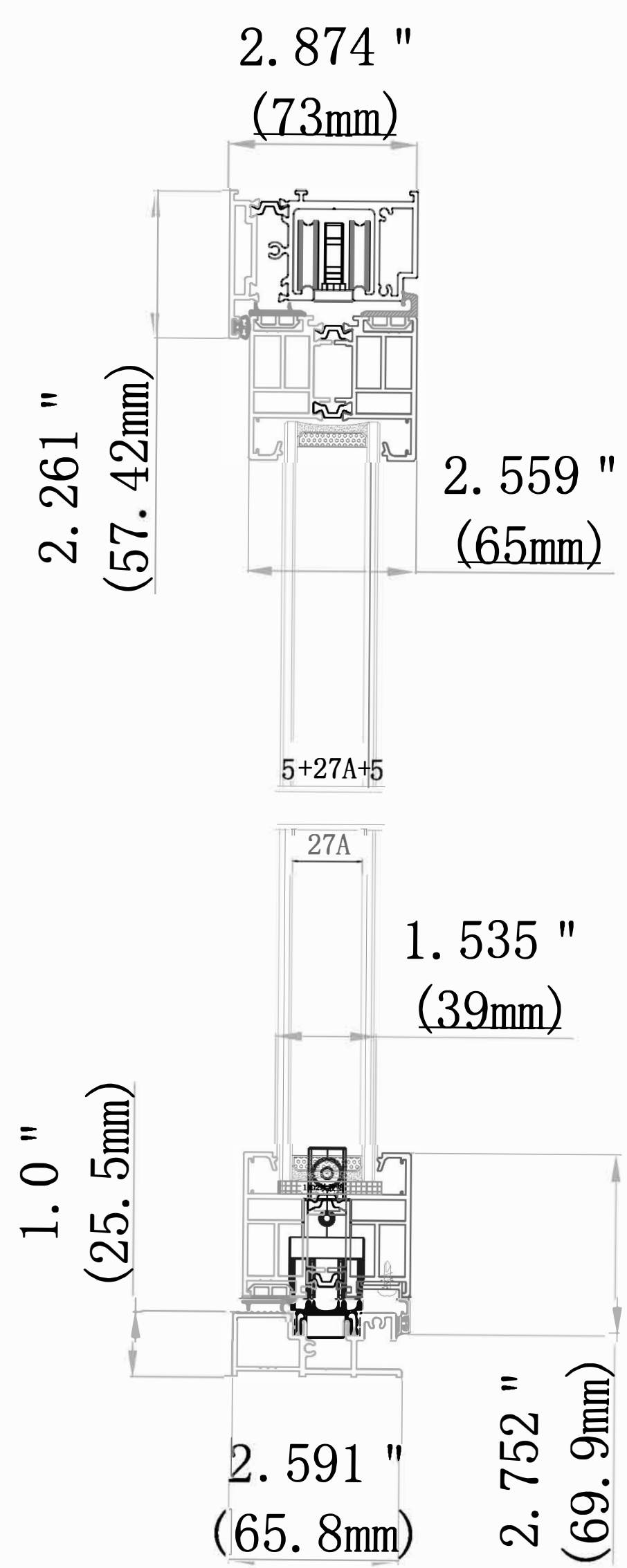
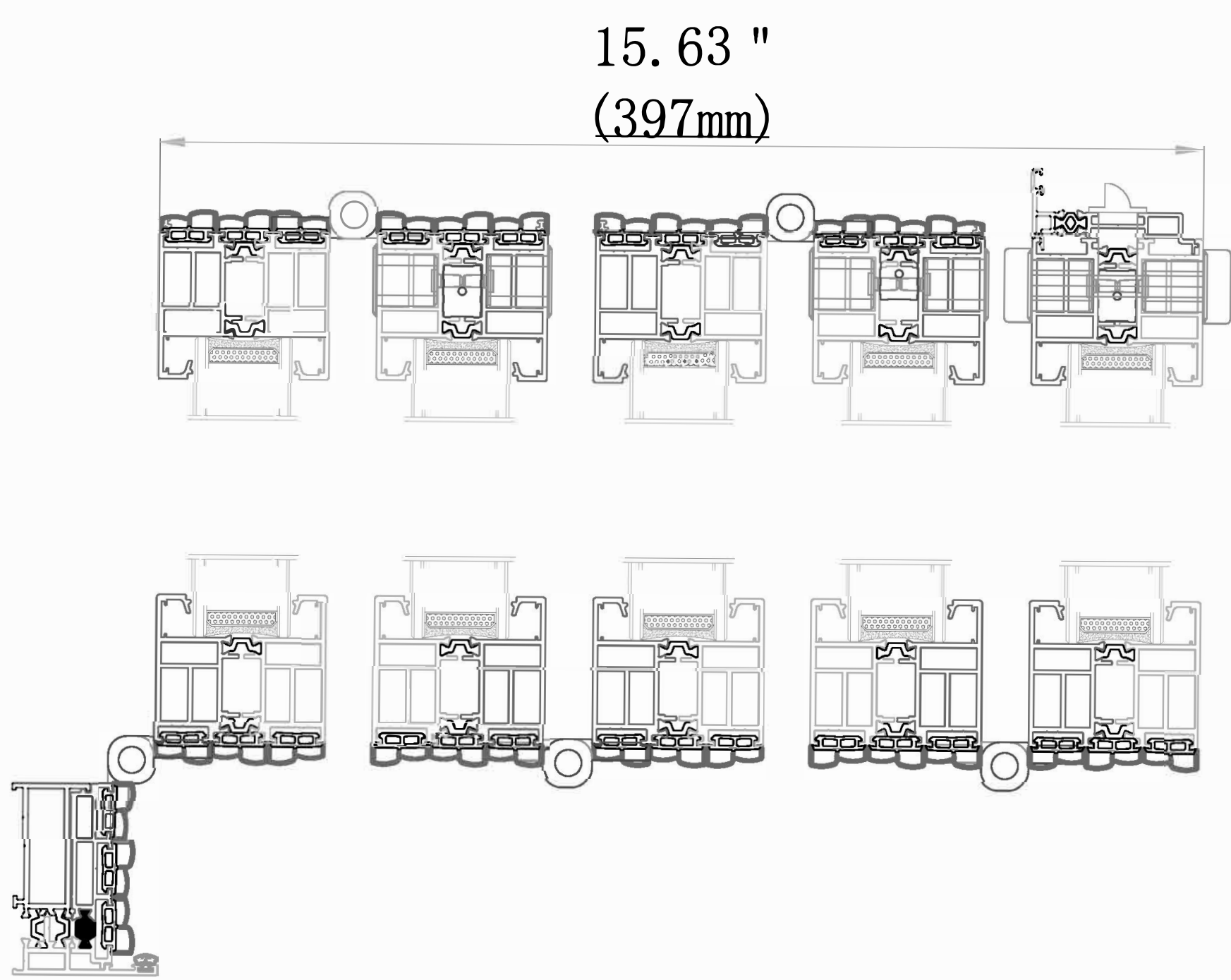
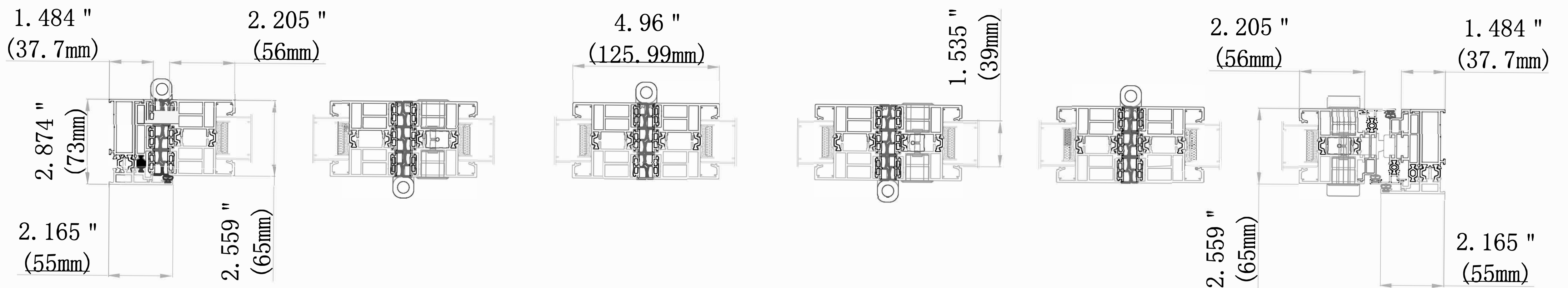
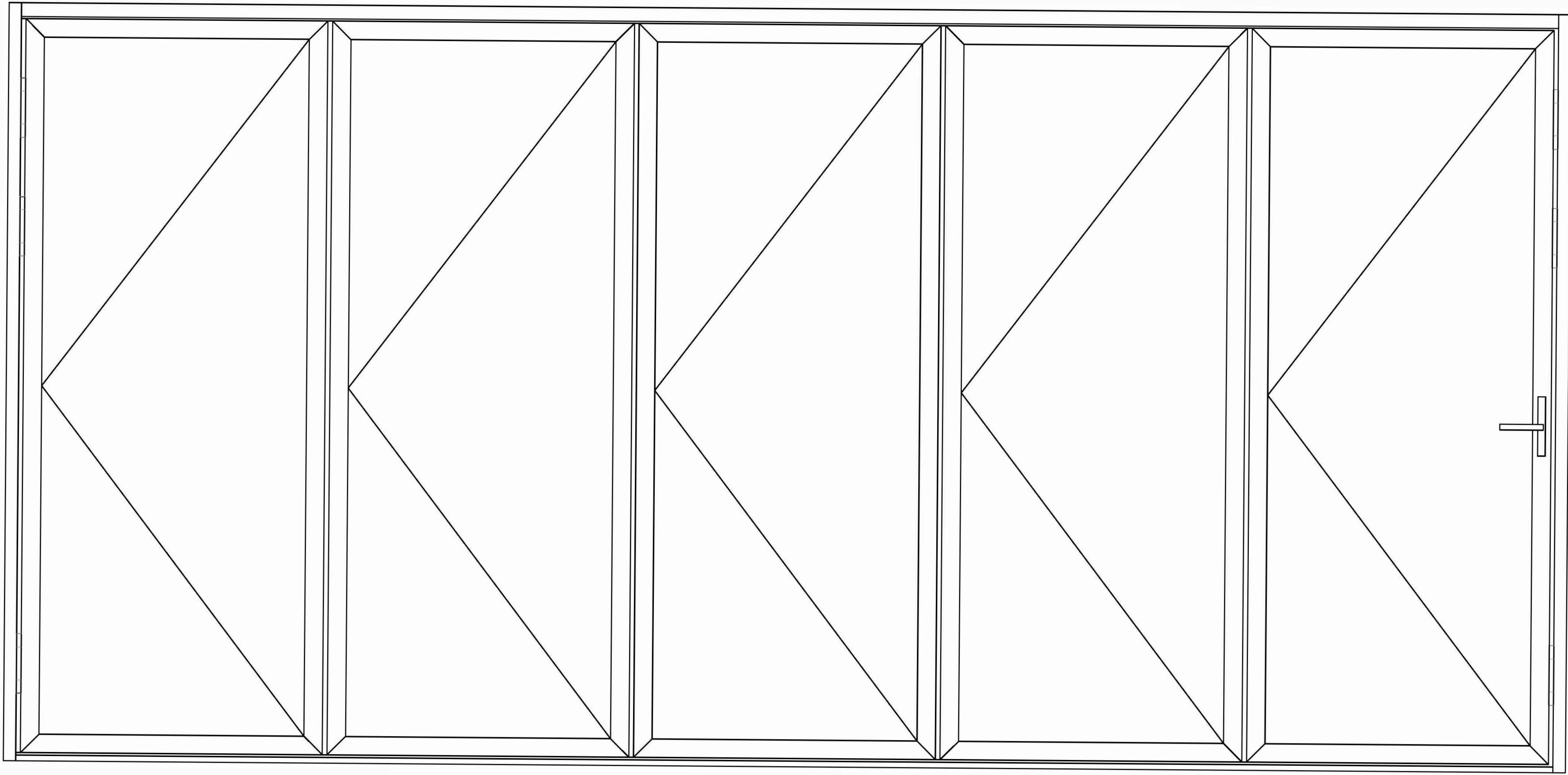


INSIDE



CORNER BIOFOLD DOOR

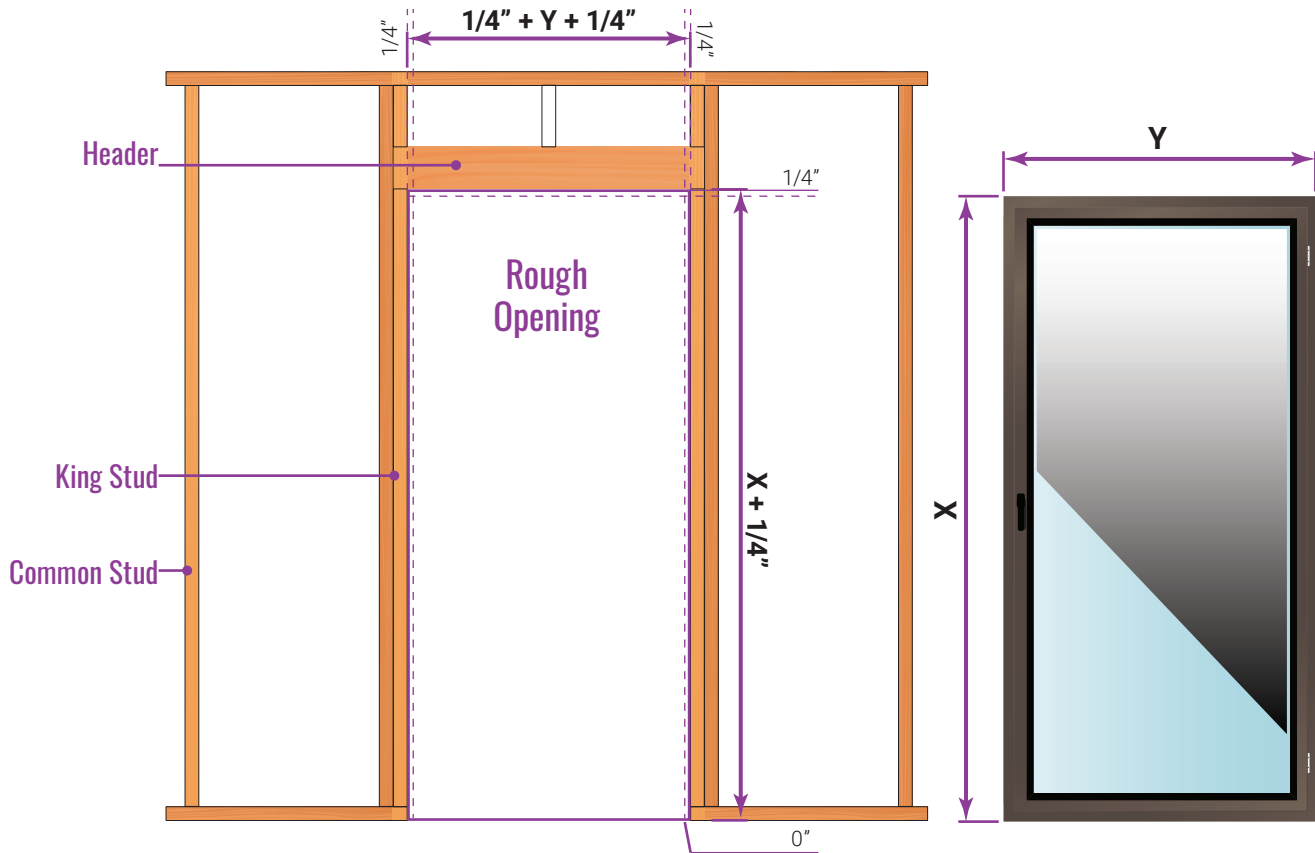




## Measurements and Rough Opening

TEZA products sizes its products from the frame to frame. The sizes on the invoice will be exact sizes of products. For rough opening requires 1/4" to each side (left, right and top).

Installation is the sole responsibility of the home owner, distributor user contractor, or their representative.



## Inspection Report

No.	Inspection Item	Unit Symbol	Standard Requirement	Inspection Result	Result
1	<b>Mg</b>	%	0.45-0.9	0.46	Qualified
2	<b>Si</b>	%	0.20-0.6	0.38	Qualified
3	<b>Fe</b>	%	$\leq 0.35$	0.16	Qualified
4	<b>Cu</b>	%	$\leq 0.10$	0.03	Qualified
5	<b>Zn</b>	%	$\leq 0.10$	0.03	Qualified
6	<b>Mn</b>	%	$\leq 0.10$	0.03	Qualified
7	<b>Cr</b>	%	$\leq 0.10$	0.02	Qualified
8	<b>Ti</b>	%	$\leq 0.10$	0.03	Qualified

## Notes

- All Teza window series flanges are included.
- Flanges are 1" in height and installed with screws.
- For rough opening size, allow a minimum 1/4" gap between the window and rough opening.
- All dimensions are in feet and inches.
- All dimensions are to be checked on site.
- Any discrepancy between the architectural drawing and other drawings relevant for construction should be notified before commencement.
- Sill pans are required by code for doors and windows.



Teza's aluminum products are exceptionally recyclable. In fact, aluminum is one of the most recyclable materials on the planet, capable of being recycled repeatedly without losing its quality or integrity.



(818)818-6001



[sales@Tezadoors.com](mailto:sales@Tezadoors.com)



[www.Tezadoors.com](http://www.Tezadoors.com)



4943 Telegraph Rd  
Los Angeles, CA 90022