

# TEZA Entry Doors

Where First Impressions Last



**TEZA's Entry Doors, Crafted from durable materials and enhanced with sleek designs, our entry doors offer both security and style**

## TEZA Pivot Entry Door

The **TEZA Pivot Entry Door** combines exceptional security with stunning design, offering a striking first impression for any home. Crafted with durable materials and equipped with a thermal break for superior insulation, this door ensures energy efficiency and protection from the elements year-round. Available in custom sizes and finishes, the Pivot Entry Door can be tailored to suit any home’s style, while its low-maintenance design ensures long-lasting performance. **Each panel supports a minimum width and maximum width of 72", with no limitation on height**, allowing for bold, large-scale entry designs. Offering both strong security and an elegant aesthetic, this door is the perfect choice for those looking to enhance curb appeal and create a secure, welcoming entryway.

## TEZA Hinge Entry Door

The **TEZA Hinge Entry Door** offers a perfect blend of security, energy efficiency, and timeless style, making it an ideal choice for any home. Designed with durable materials and equipped with a thermal break, this door ensures optimal insulation and protection from the elements. The Hinge Entry Door comes in custom sizes and finishes, **with a maximum panel width of 48 inches and no limitation on height**, providing flexibility to match your home’s unique design. With its low-maintenance construction and strong, secure build, this door is designed to stand the test of time while boosting your home’s curb appeal and offering lasting peace of mind.

## Energy Efficiency

Glass can be customized with various coatings, including Low E2, Low E4, and clear glass, to enhance privacy, protection, and thermal efficiency. These options let you choose the best fit for your needs, whether maximizing energy savings or improving comfort. The thermally broken aluminum frame adds an insulating barrier that significantly boosts energy performance, maintaining a consistent indoor temperature and reducing energy consumption. By combining customizable glass options with thermally efficient frames, our Products deliver superior performance and long-term benefits for your home or commercial space.

## Performance Chart

Frame Material	Aluminum 6063-TS
Frame Thickness	1.72mm DSLS115ZB-02A
U-Factor	0.30
Argon Fill	90%
Solar Heat Gain Coefficient	0.23
Visible Transmittance	0.51
Air Leakage	0.30
Sound Performance	0.30
Wind Load Resistance	77 mph

## Glass Options

### Standard

#### **DUAL-PANE INSULATED GLASS (1/4" - 5mm/pane)**

This high-performance double glazing system features two glass panes separated by an argon-filled gap, significantly reducing heat transfer. This advanced insulation enhances energy efficiency, indoor comfort, and lowers energy costs, making it a smart choice for any building.

### Custom

#### **TRIPLE-PANE INSULATED GLASS (1/4" - 5mm/pane)**

TEZA's TRIPLE-PANE GLASS features an advanced multi-pane design, offering exceptional thermal insulation that significantly outperforms standard glass. The additional layers of glass, separated by argon-filled air gaps, minimize heat and cold transfer, helping maintain indoor temperatures for greater comfort and long-term energy savings. This system also enhances noise reduction, while providing increased security and durability against impacts and harsh weather conditions.

### Standard

#### **LOW-E2 GLASS (OFFLINE) (1/4" - 5mm/pane)**

TEZA's LOW-E2 GLASS is designed to minimize heat loss in winter and reduce heat gain in summer while maintaining excellent visibility and year-round energy efficiency. It adapts to various climates, blocking 85% of harmful UV rays and 65% of re-radiated solar heat, ensuring a comfortable and energy-efficient indoor environment.

### Custom

#### **LOW-E4 GLASS (OFFLINE) (1/4" - 5mm/pane)**

TEZA's LOW-E4 GLASS delivers exceptional energy efficiency by reflecting heat back into the home while blocking 90% of harmful UV rays and 72% of solar heat. Designed for superior insulation and solar control, it also provides better insulation than standard glass and enhances soundproofing, making it an ideal choice for various climates.

### Custom

#### **HIGH-ALTITUDE INSULATED GLASS (1/4" - 5mm/pane)**

TEZA's HIGH-ALTITUDE GLASS is specifically engineered for use in elevated areas above 2,000 feet. Instead of argon gas, it features integrated capillary tubes that equalize pressure between the glass panes, preventing issues like bowing and breakage caused by lower atmospheric pressure. This specialized design ensures durability, longevity, and optimal performance in high-altitude environments.

## Custom

**LAMINATED GLASS (1/4" - 5mm/pane)**

Teza Laminated Glass is a safety glass designed specifically for windows and doors, featuring two or more panes bonded with a durable interlayer, typically polyvinyl butyral (PVB). This construction ensures that the glass remains intact when shattered, enhancing safety and preventing injury. Ideal for residential and commercial applications, Teza Laminated Glass also offers improved noise reduction and weather resistance, making it a reliable choice for any window or door setting.

## Standard

**Double Tempered Glass (1/4" - 5mm/pane)**

Teza Double Tempered Glass features two panes of heat-treated glass separated by a sealed airspace, enhancing strength and safety. It shatters into small, blunt pieces if broken, reducing injury risk. The sealed airspace improves thermal insulation and energy efficiency, making it ideal for windows and doors in any area, including fire zones, where safety and durability are paramount.

<b>Glass Type</b>	<b>U-Factor</b> Reduces heat loss.	<b>Solar Heat Gain Coefficient</b> Limits solar heat	<b>Visible Light Transmittance</b> Controls light passage.	<b>UV Protection</b> Blocks UV rays.
<b>DUAL-PANE</b>	★★★★	★★	★★★★★★	★★★★
<b>TRIPLE-PANE GLASS</b>	★★★★★★	★★★★★★	★★★★	★★★★★★
<b>LOW-E 2 GLASS</b>	★★★★	★★★★	★★★★	★★★★
<b>LOW-E 4 GLASS</b>	★★★★	★★★★	★★★★	★★★★★★
<b>HIGH-ALTITUDE</b>	★★★★	★★★★	★★★★	★★★★
<b>LAMINATED GLASS</b>	★★★★	★★★★	★★★★	★★★★★★

<b>Dual Insulating Glass Construction</b>	STC	OITC*	Frequency (Hz)															
			100	125	160	200	250	315	400	500	630	800	1000	1250	1600	2000	2500	3150
			Sound Transmission Loss (dB)															
1" overall- ¼", glass, ½", airspace, ¼" glass	35	30	27	24	29	22	22	25	30	33	35	35	38	40	42	37	37	43
1" overall- ¼", glass, ½", airspace, ¼" glass	38	31	27	23	28	21	27	29	34	35	37	37	41	43	45	44	39	46
<b>Triple Insulating Glass Construction</b>	STC	OITC*	Frequency (Hz)															
			100	125	160	200	250	315	400	500	630	800	1000	1250	1600	2000	2500	3150
			Sound Transmission Loss (dB)															
1- ¾" overall - ¼" glass, ½" airspace, ¼" glass, ½" airspace, ¼" glass	39	31	25	22	29	24	25	29	34	37	40	40	43	46	48	47	41	47
2- ¾" overall - 3/8" glass, ¾" airspace, 5/16", glass ¾" airspace, 1/4" glass, 0.60" PVB, ¼" glass	45	35	33	30	34	37	39	43	44	45	46	46	43	41	43	49	55	57



## Finishes and Colors

TEZA finishes include in-stock and designer selections, customizable to match nearly any color. Standard finishes feature powder-coated Cartier Black and Cartier White. TEZA's durable powder coating provides exceptional resistance to wear, scratches, and corrosion, ensuring long-lasting performance and aesthetic appeal.

### Color Choice



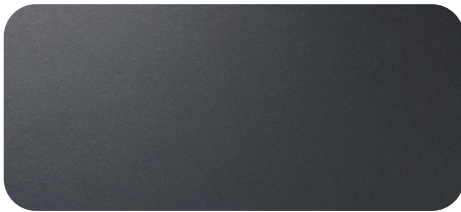
**Cartier Black**



**Cartier White**



**White Oak**



**Ferrero Gray**



**Cartier Silver**



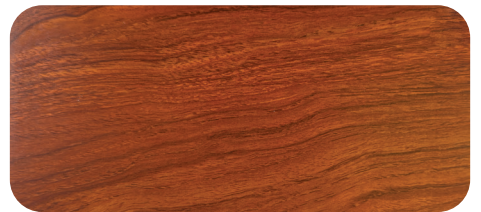
**Light Silver**



**Gold Oak**



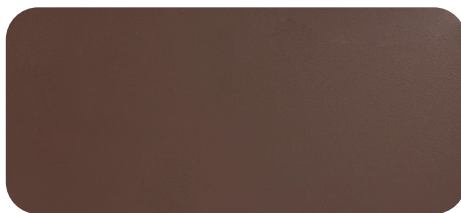
**Walnut Wood**



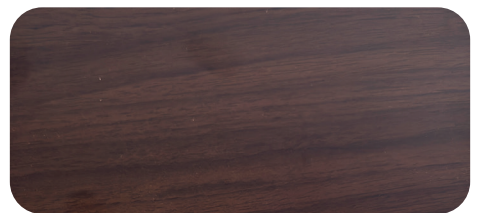
**Hainan Scented Rosewood**



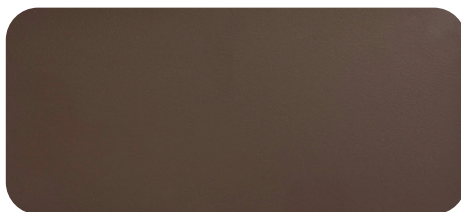
**Ash**



**Mocha Coffee**



**Indians Red Oak**



**Cartier Dark Coffee**

## Entry door Highlights



Double Pane Glass  
with Argon Gas

Low-E Tempered Glass

Polyamide Spacer

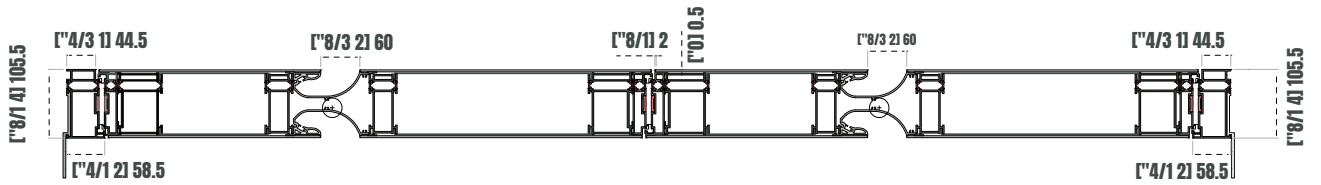
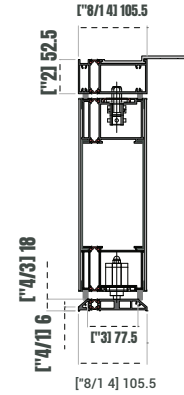
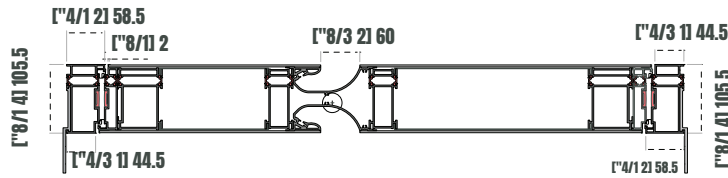
High-Quality Weather Strips

Durable Powder-Coated Finish

Feature	TEZA Entry Doors
Design Options	Pivot & Hinged
Locking System	Smart Lock System
Track Options	Standard
Smart Lock	Yes
Hinges	Hidden Hinges
Glass Customization	Blinds Inside Glass/Smart Glass/Frosted Glass
Weather Strips	Yes
Customization	Customizable
Sizes Available	Standard Sizes Available

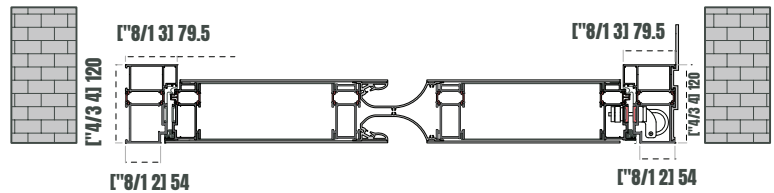
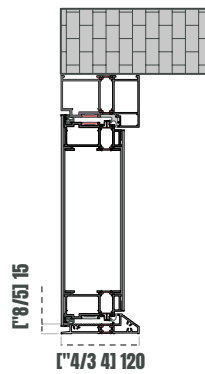
Broken bridge system  
Off-axis door

Single opening

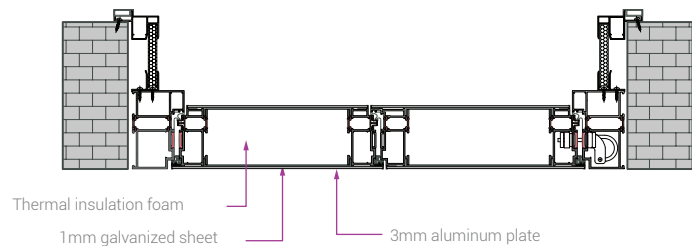
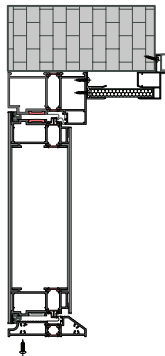


Double opening

Single opening



Broken bridge system  
Entrance door

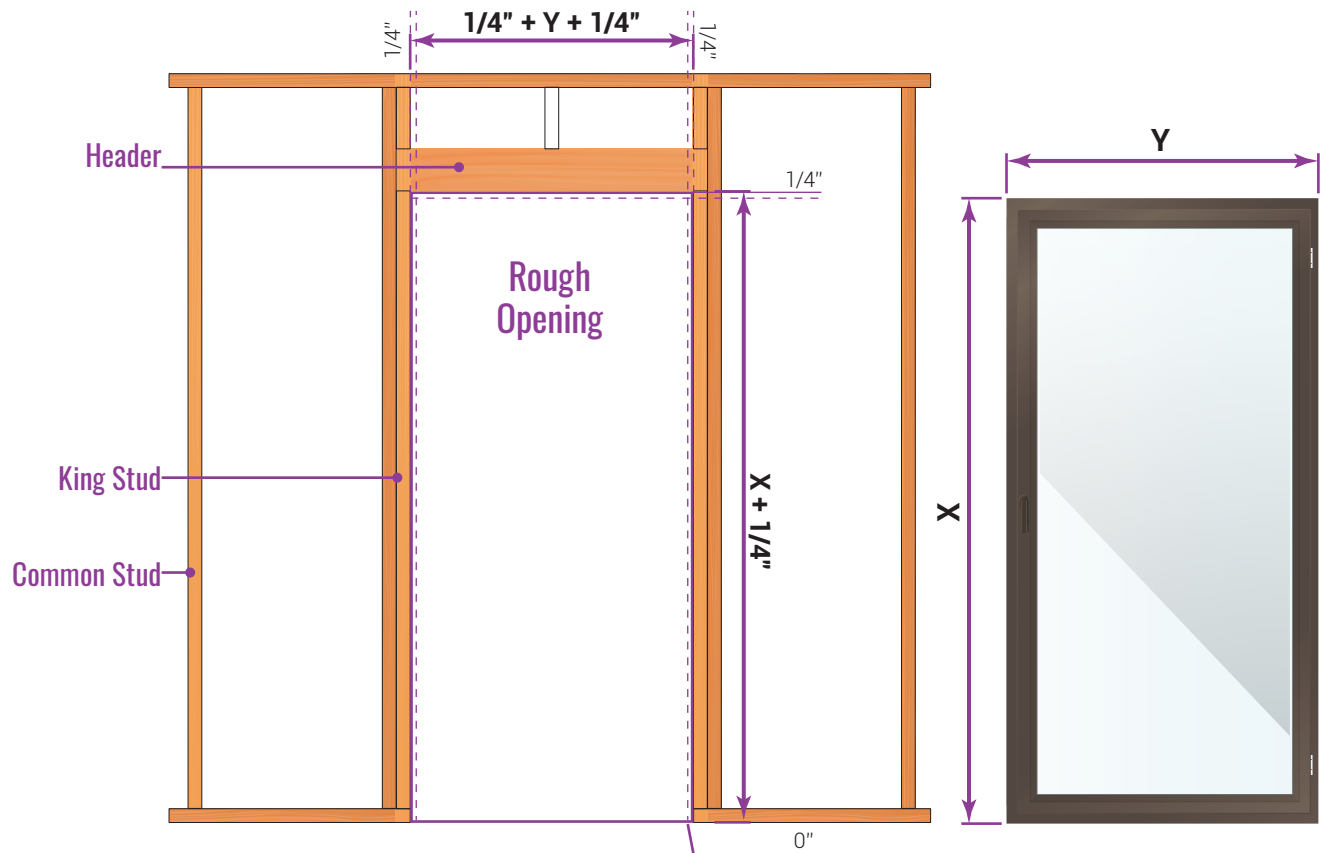


Double opening

## Measurements and Rough Opening

TEZA products sizes its products from the frame to frame. The sizes on the invoice will be exact sizes of products. For rough opening requires 1/4" to each side (left, right and top).

Installation is the sole responsibility of the home owner, distributor user contractor, or their representative.



## Inspection Report

No.	Inspection Item	Unit Symbol	Standard Requirement	Inspection Result	Result
1	<b>Mg</b>	%	0.45-0.9	0.46	Qualified
2	<b>Si</b>	%	0.20-0.6	0.38	Qualified
3	<b>Fe</b>	%	$\leq 0.35$	0.16	Qualified
4	<b>Cu</b>	%	$\leq 0.10$	0.03	Qualified
5	<b>Zn</b>	%	$\leq 0.10$	0.03	Qualified
6	<b>Mn</b>	%	$\leq 0.10$	0.03	Qualified
7	<b>Cr</b>	%	$\leq 0.10$	0.02	Qualified
8	<b>Ti</b>	%	$\leq 0.10$	0.03	Qualified



## Notes

- For rough opening size, allow a minimum 1/4" gap between the Door and rough opening.
- All dimensions are in mm or inches.
- All dimensions are to be checked on site.
- Any discrepancy between the architectural drawing and other drawings relevant for construction should be notified before commencement.
- Sill pans are required by code for doors and windows.



Teza's aluminum products are exceptionally recyclable. In fact, aluminum is one of the most recyclable materials on the planet, capable of being recycled repeatedly without losing its quality or integrity.



(818)818-6001



[sales@Tezadoors.com](mailto:sales@Tezadoors.com)



[www.Tezadoors.com](http://www.Tezadoors.com)



4943 Telegraph Rd  
Los Angeles, CA 90022