

# TEZA 65 Series

## French Door



Explore a world of possibilities with TEZA Doors and Windows, where we don't just open doors, we create entrances to a better living. Welcome home.



**TEZA's 65 Series French doors**, in single or double configurations, are valued for their aesthetic appeal and functionality. They enhance spaces with customizable designs, natural light, and timeless elegance.

## Product Overview

TEZA’s 65 Series Thermal Break French Doors combine elegance and functionality, featuring a striking design with multiple glass panels (lite). These versatile doors are side-hinged and can swing either inward or outward, offering a generous opening for any space.

Engineered for durability and convenience, they include adjustable hinges, a robust 3-point locking system, and enhanced waterproofing. The powder-coated finish ensures long-lasting beauty with minimal maintenance, while the 1/2” wide polyamide thermal brake system provides superior insulation. Customizable grid designs and optional blinds between the glass add a personalized touch to match your style.

Built with premium materials and precise manufacturing techniques, these doors deliver smooth operation and exceptional longevity. Tested by independent third parties for air, water, and structural performance, they are crafted with a 2 1/2” (64mm) frame depth and are available in panel sizes ranging from 32” to 38” in width and 80” to 120” in height.

## Energy Efficiency

Glass can be clear or customized with coatings like Low E2 and Low E4 to enhance energy efficiency and comfort. These Low-E coatings reflect infrared heat, helping keep interiors cooler in summer and warmer in winter, while still transmitting visible light. They also improve insulation and reduce UV rays that can fade furniture. When combined with thermally broken aluminum frames, which provide additional insulation, these features significantly improve the thermal performance of windows and doors, resulting in increased energy savings, lasting comfort, and added value for both residential and commercial spaces.

## Performance Chart

|                             |                         |
|-----------------------------|-------------------------|
| Frame Material              | Aluminum 6063-TS        |
| Frame Thickness             | 1.72mm<br>DSLS115ZB-02A |
| U-Factor                    | 0.30                    |
| Argon Fill                  | 90%                     |
| Solar Heat Gain Coefficient | 0.23                    |
| Visible Transmittance       | 0.51                    |
| Air Leakage                 | 0.30                    |
| Sound Performance           | 0.30                    |
| Wind Load Resistance        | 77 mph                  |

## Inspection Report

| No. | Inspection Item | Unit Symbol | Standard Requirement | Inspection Result | Result    |
|-----|-----------------|-------------|----------------------|-------------------|-----------|
| 1   | Mg              | %           | 0.45-0.9             | 0.46              | Qualified |
| 2   | Si              | %           | 0.20-0.6             | 0.38              | Qualified |
| 3   | Fe              | %           | ≤0.35                | 0.16              | Qualified |
| 4   | Cu              | %           | ≤0.10                | 0.03              | Qualified |
| 5   | Zn              | %           | ≤0.10                | 0.03              | Qualified |
| 6   | Mn              | %           | ≤0.10                | 0.03              | Qualified |
| 7   | Cr              | %           | ≤0.10                | 0.02              | Qualified |
| 8   | Ti              | %           | ≤0.10                | 0.03              | Qualified |

## Glass Options

### Standard

#### **DUAL-PANE INSULATED GLASS (1/4" - 5mm/pane)**

This high-performance double glazing system features two glass panes separated by an argon-filled gap, significantly reducing heat transfer. This advanced insulation enhances energy efficiency, indoor comfort, and lowers energy costs, making it a smart choice for any building.

### Custom

#### **TRIPLE-PANE INSULATED GLASS (1/4" - 5mm/pane)**

TEZA's TRIPLE-PANE GLASS features an advanced multi-pane design, offering exceptional thermal insulation that significantly outperforms standard glass. The additional layers of glass, separated by argon-filled air gaps, minimize heat and cold transfer, helping maintain indoor temperatures for greater comfort and long-term energy savings. This system also enhances noise reduction, while providing increased security and durability against impacts and harsh weather conditions.

### Standard

#### **LOW-E2 GLASS (OFFLINE) (1/4" - 5mm/pane)**

TEZA's LOW-E2 GLASS is designed to minimize heat loss in winter and reduce heat gain in summer while maintaining excellent visibility and year-round energy efficiency. It adapts to various climates, blocking 85% of harmful UV rays and 65% of re-radiated solar heat, ensuring a comfortable and energy-efficient indoor environment.

### Custom

#### **LOW-E4 GLASS (OFFLINE) (1/4" - 5mm/pane)**

TEZA's LOW-E4 GLASS delivers exceptional energy efficiency by reflecting heat back into the home while blocking 90% of harmful UV rays and 72% of solar heat. Designed for superior insulation and solar control, it also provides better insulation than standard glass and enhances soundproofing, making it an ideal choice for various climates.

### Custom

#### **HIGH-ALTITUDE INSULATED GLASS (1/4" - 5mm/pane)**

TEZA's HIGH-ALTITUDE GLASS is specifically engineered for use in elevated areas above 2,000 feet. Instead of argon gas, it features integrated capillary tubes that equalize pressure between the glass panes, preventing issues like bowing and breakage caused by lower atmospheric pressure. This specialized design ensures durability, longevity, and optimal performance in high-altitude environments.

## Custom

**LAMINATED GLASS (1/4" - 5mm/pane)**

Teza Laminated Glass is a safety glass designed specifically for windows and doors, featuring two or more panes bonded with a durable interlayer, typically polyvinyl butyral (PVB). This construction ensures that the glass remains intact when shattered, enhancing safety and preventing injury. Ideal for residential and commercial applications, Teza Laminated Glass also offers improved noise reduction and weather resistance, making it a reliable choice for any window or door setting.

## Standard

**Double Tempered Glass (1/4" - 5mm/pane)**

Teza Double Tempered Glass features two panes of heat-treated glass separated by a sealed airspace, enhancing strength and safety. It shatters into small, blunt pieces if broken, reducing injury risk. The sealed airspace improves thermal insulation and energy efficiency, making it ideal for windows and doors in any area, including fire zones, where safety and durability are paramount.

| <b>Glass Type</b>        | <b>U-Factor</b><br>Reduces heat loss. | <b>Solar Heat Gain Coefficient</b><br>Limits solar heat | <b>Visible Light Transmittance</b><br>Controls light passage. | <b>UV Protection</b><br>Blocks UV rays. |
|--------------------------|---------------------------------------|---|---|---|
| <b>DUAL-PANE</b>         | ★★★★                                  | ★★  | ★★★★★★  | ★★★★                                    |
| <b>TRIPLE-PANE GLASS</b> | ★★★★★★                                | ★★★★★★  | ★★★★  | ★★★★★★                                  |
| <b>LOW-E 2 GLASS</b>     | ★★★★                                  | ★★★★  | ★★★★  | ★★★★                                    |
| <b>LOW-E 4 GLASS</b>     | ★★★★                                  | ★★★★  | ★★★★  | ★★★★★★                                  |
| <b>HIGH-ALTITUDE</b>     | ★★★★                                  | ★★★★  | ★★★★  | ★★★★                                    |
| <b>LAMINATED GLASS</b>   | ★★★★                                  | ★★★★  | ★★★★  | ★★★★★★                                  |

| Dual Insulating Glass Construction   | STC | OITC* | Frequency (Hz)                |     |     |     |     |     |     |     |     |     |      |      |      |      |      |      |      |      |
|--|-----|-------|-------------------------------|-----|-----|-----|-----|-----|-----|-----|-----|-----|------|------|------|------|------|------|------|------|
|  |     |       | 100                           | 125 | 160 | 200 | 250 | 315 | 400 | 500 | 630 | 800 | 1000 | 1250 | 1600 | 2000 | 2500 | 3150 | 4000 | 5000 |
|  |     |       | Sound Transmission Loss ( bB) |     |     |     |     |     |     |     |     |     |      |      |      |      |      |      |      |      |
| 1" overall- ¼", glass, ½", airspace, ¼" glass  | 35  | 30    | 27                            | 24  | 29  | 22  | 22  | 25  | 30  | 33  | 35  | 35  | 38   | 40   | 42   | 37   | 37   | 43   | 46   | 49   |
| 1" overall- ¼", glass, ½", airspace, ¼" glass  | 38  | 31    | 27                            | 23  | 28  | 21  | 27  | 29  | 34  | 35  | 37  | 37  | 41   | 43   | 45   | 44   | 39   | 46   | 49   | 52   |
| Triple Insulating Glass Construction   | STC | OITC* | Frequency (Hz)                |     |     |     |     |     |     |     |     |     |      |      |      |      |      |      |      |      |
|  |     |       | 100                           | 125 | 160 | 200 | 250 | 315 | 400 | 500 | 630 | 800 | 1000 | 1250 | 1600 | 2000 | 2500 | 3150 | 4000 | 5000 |
|  |     |       | Sound Transmission Loss ( dB) |     |     |     |     |     |     |     |     |     |      |      |      |      |      |      |      |      |
| 1- ¾" overall – ¼" glass, ½" airspace, ¼" glass, ½" airspace, ¼" glass                           | 39  | 31    | 25                            | 22  | 29  | 24  | 25  | 29  | 34  | 37  | 40  | 40  | 43   | 46   | 48   | 47   | 41   | 47   | 52   | 58   |
| 2- ¾" overall – 3/8"glass, ¾" airspace,5/16" , glass ¾" airspace,1/4" glass, 0.60" PVB, ¼" glass | 45  | 35    | 33                            | 30  | 34  | 37  | 39  | 43  | 44  | 45  | 46  | 46  | 43   | 41   | 43   | 49   | 55   | 57   | 61   | 65   |



## Finishes and Colors

TEZA finishes include in-stock and designer selections, customizable to match nearly any color. Standard finishes feature powder-coated Cartier Black and Cartier White. TEZA's durable powder coating provides exceptional resistance to wear, scratches, and corrosion, ensuring long-lasting performance and aesthetic appeal.

### Color Choice



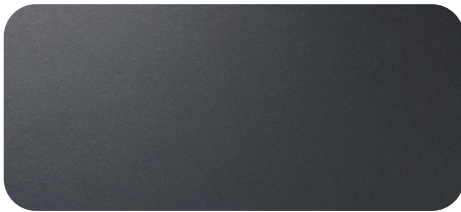
**Cartier Black**



**Cartier White**



**White Oak**



**Ferrero Gray**



**Cartier Silver**



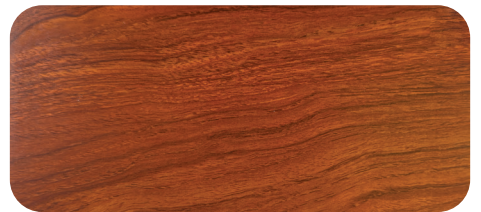
**Light Silver**



**Gold Oak**



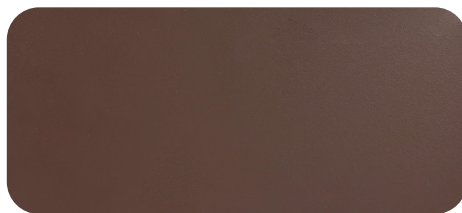
**Walnut Wood**



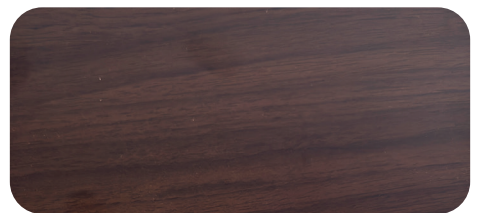
**Hainan Scented Rosewood**



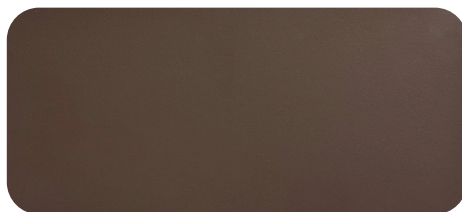
**Ash**



**Mocha Coffee**

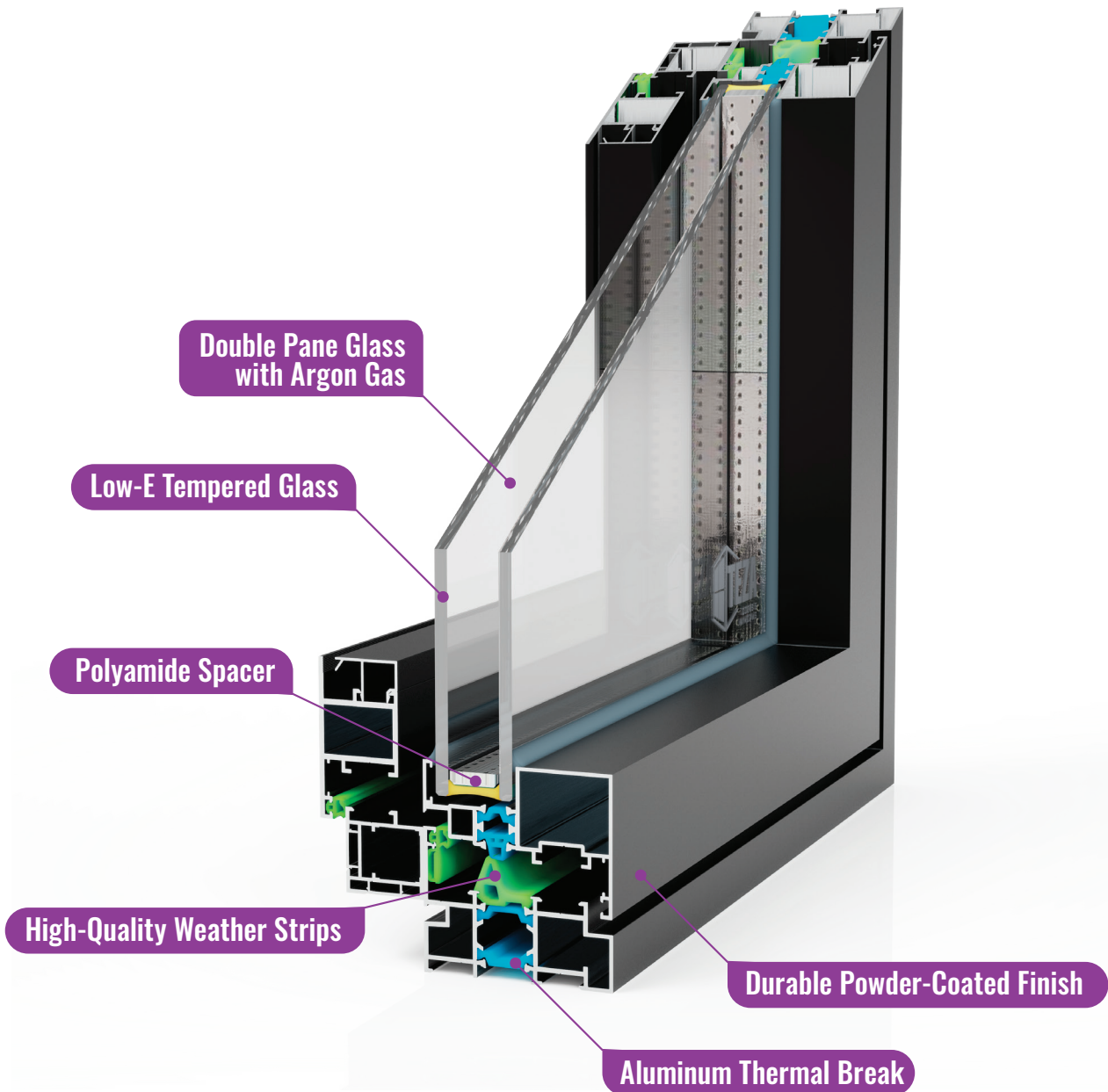


**Indians Red Oak**

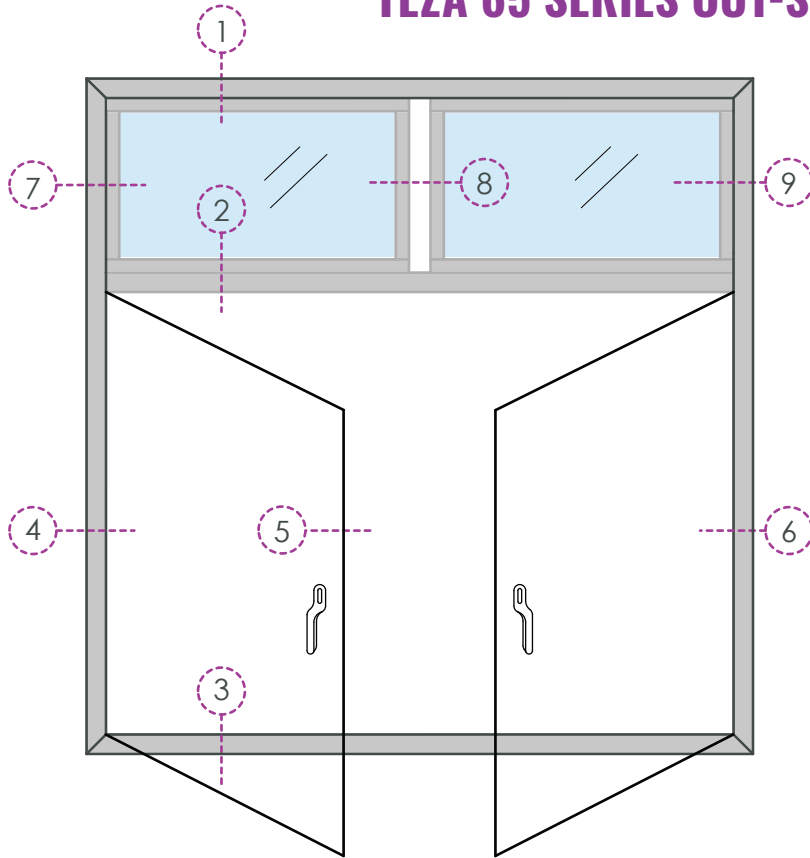


**Cartier Dark Coffee**

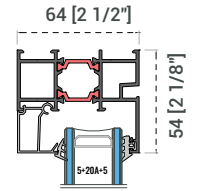
## 65 Series French Doors Highlights



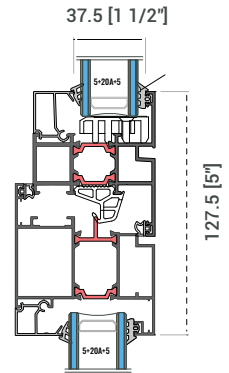
# TEZA 65 SERIES OUT-SWING DOOR



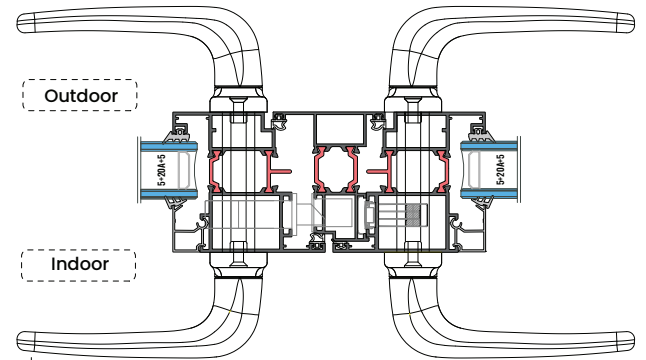
Detail 1



Detail 2

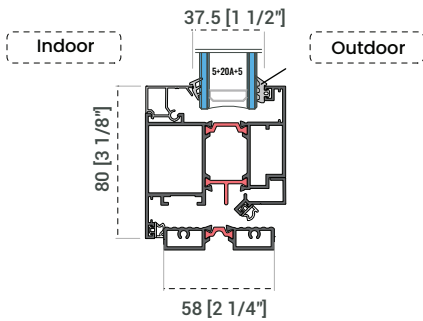


Detail 5

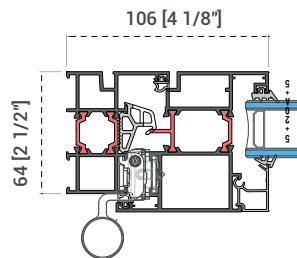


The handle and transmission box diagram shown in the figure is for reference only. The actual model may vary.

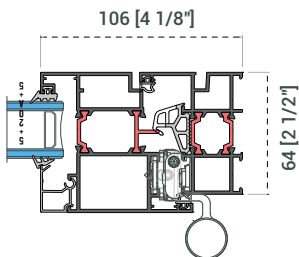
Detail 3



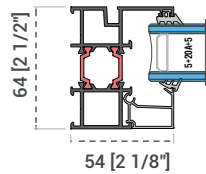
Detail 4



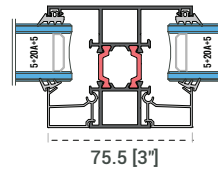
Detail 6



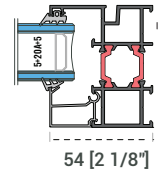
Detail 7



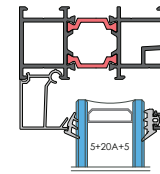
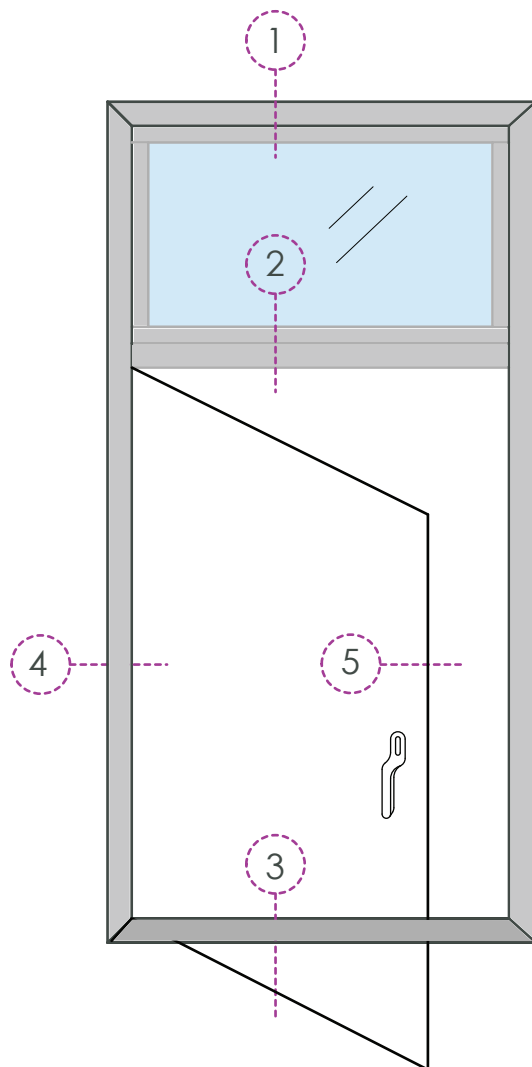
Detail 8



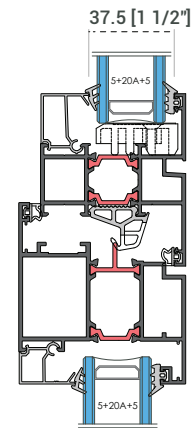
Detail 9



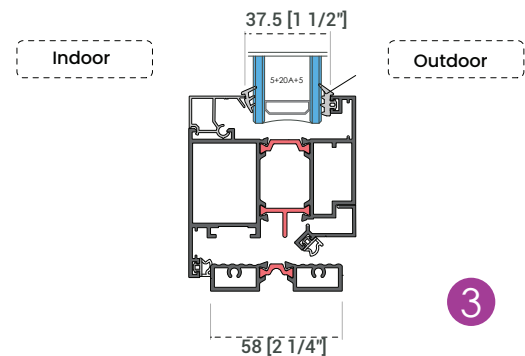
# TEZA 65 SERIES OUT-SWING DOOR



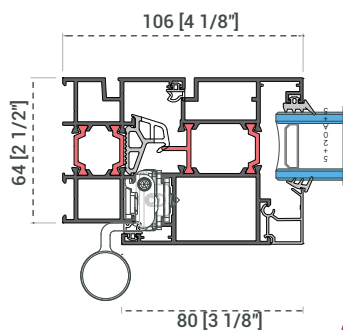
1



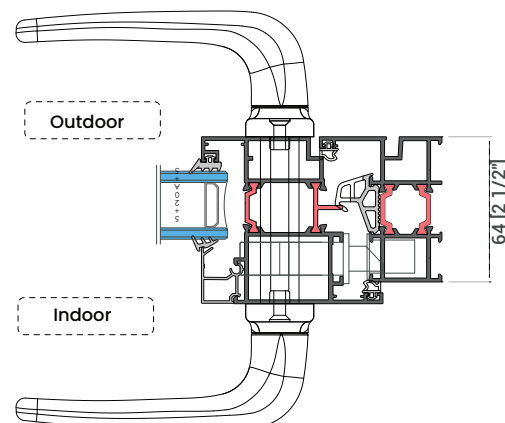
2



3



4



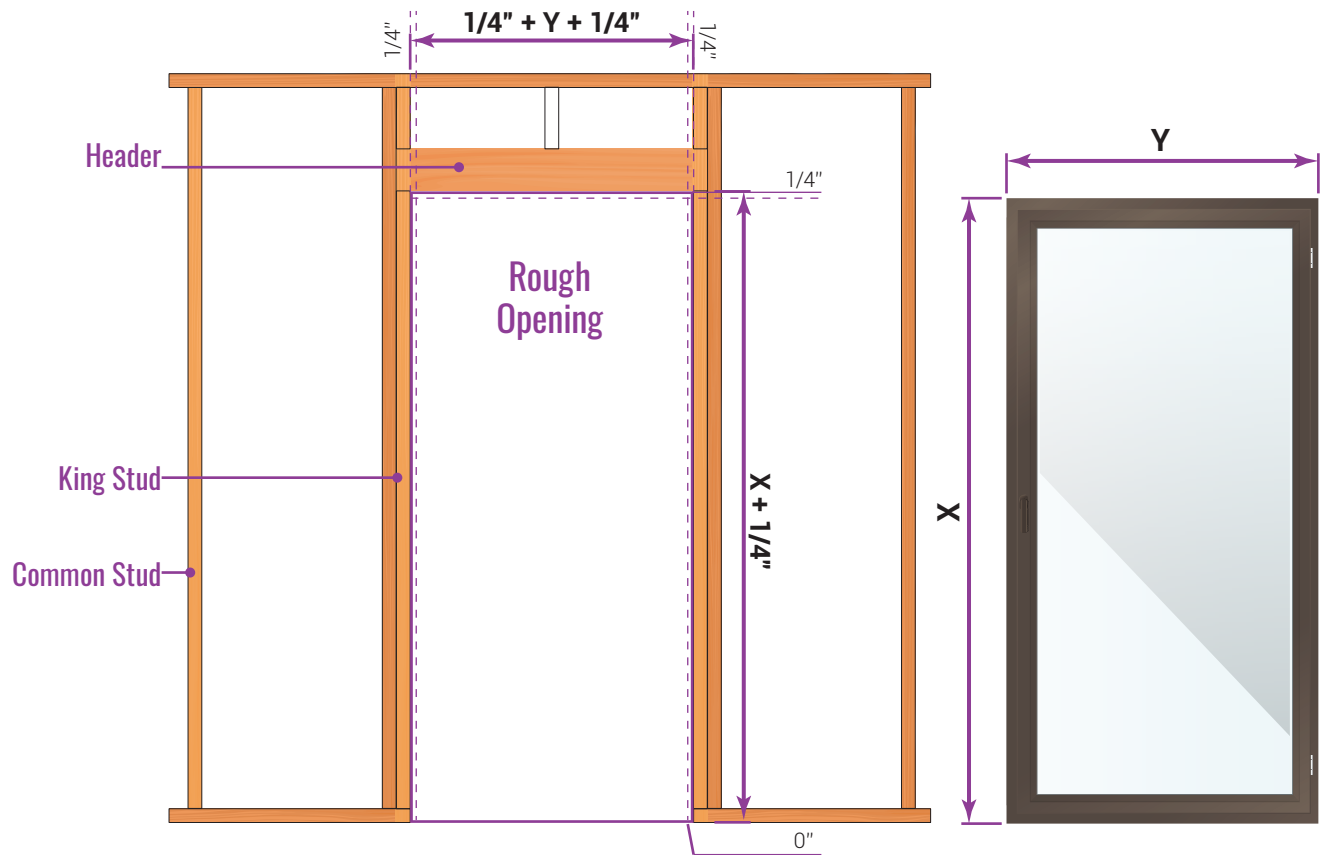
5



## Measurements and Rough Opening

TEZA products sizes its products from the frame to frame. The sizes on the invoice will be exact sizes of products. For rough opening requires 1/4" to each side (left, right and top).

Installation is the sole responsibility of the home owner, distributor user contractor, or their representative.



## Notes

- For rough opening size, allow a minimum 1/4" gap between the Door and rough opening.
- All dimensions are in mm or inches.
- All dimensions are to be checked on site.
- Any discrepancy between the architectural drawing and other drawings relevant for construction should be notified before commencement.
- Sill pans are required by code for doors and windows.



Teza's aluminum products are exceptionally recyclable. In fact, aluminum is one of the most recyclable materials on the planet, capable of being recycled repeatedly without losing its quality or integrity.



(818)818-6001



[sales@Tezadoors.com](mailto:sales@Tezadoors.com)



[www.Tezadoors.com](http://www.Tezadoors.com)



4943 Telegraph Rd  
Los Angeles, CA 90022