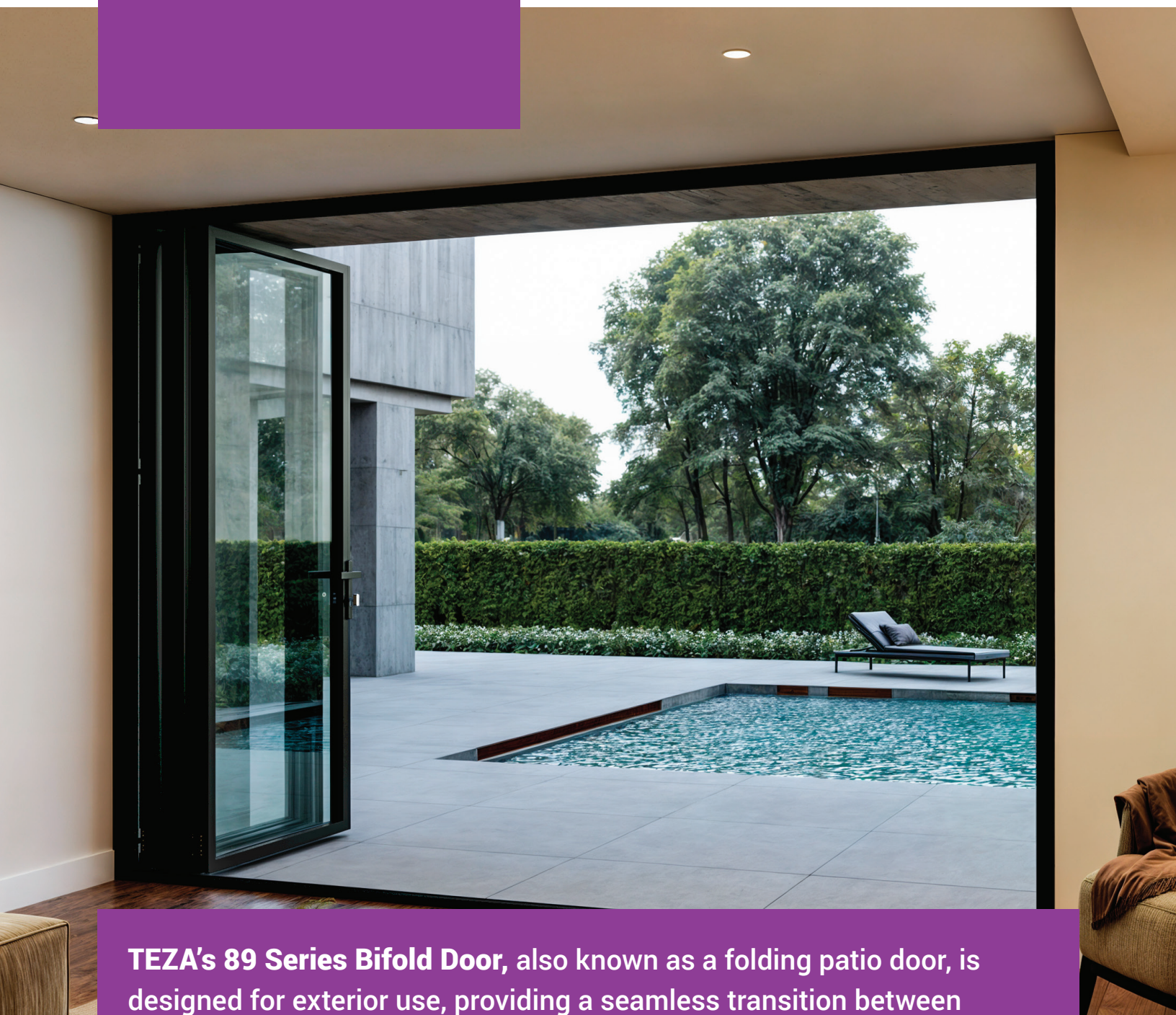


TEZA 89 Series Folding Door



TEZA's 89 Series Bifold Door, also known as a folding patio door, is designed for exterior use, providing a seamless transition between indoor and outdoor living spaces.

Product Overview

The TEZA 89 Series Bifold Door combines sleek, modern aesthetics with outstanding functionality and energy efficiency, performing exceptionally well even under harsh conditions. Featuring foam-filled profiles for enhanced insulation, this series ensures superior energy savings and comfort year-round, while also providing durability against the elements. The German-made medium-duty hardware and 3-point locking system offer reliable security, while hidden hinges and flush interior handles create a clean, streamlined look. Customizable glass options, including smart glass and frosted glass, further elevate its appeal, making it an ideal choice for contemporary living spaces that require both style and performance.

Energy Efficiency

Glass can be customized with various coatings, including Low E2, Low E4, and clear glass, to enhance privacy, protection, and thermal efficiency. These options let you choose the best fit for your needs, whether maximizing energy savings or improving comfort. The thermally broken aluminum frame adds an insulating barrier that significantly boosts energy performance, maintaining a consistent indoor temperature and reducing energy consumption. By combining customizable glass options with thermally efficient frames, our Doors deliver superior performance and long-term benefits for your home or commercial space.

Performance Chart

Frame Material	Aluminum 6063-TS
Frame Thickness	1.72mm DSLS115ZB-02A
U-Factor	0.30
Argon Fill	90%
Solar Heat Gain Coefficient	0.23
Visible Transmittance	0.51
Air Leakage	0.30
Sound Performance	0.30
Wind Load Resistance	77 mph

Inspection Report

No.	Inspection Item	Unit Symbol	Standard Requirement	Inspection Result	Result
1	Mg	%	0.45-0.9	0.46	Qualified
2	Si	%	0.20-0.6	0.38	Qualified
3	Fe	%	≤0.35	0.16	Qualified
4	Cu	%	≤0.10	0.03	Qualified
5	Zn	%	≤0.10	0.03	Qualified
6	Mn	%	≤0.10	0.03	Qualified
7	Cr	%	≤0.10	0.02	Qualified
8	Ti	%	≤0.10	0.03	Qualified

89/95/85 Series Bifold Doors Comparison Table

Feature	89 Series	95 Series	85 Series
Price	\$\$\$	\$\$\$	\$
Size Flexibility	168W x 196H	Any Size	168W x 196H Max
Panel Sizes	40"	40"	40"
Foam Filling	Yes	Yes	No
Hardware Type	German-Made Medium Duty	U.S.-Made Heavy Duty	Clayson Normal Duty
Locking System	3-Point	5-Point	3-Point
Bottom Track Height	¾ inch	1 inch	1 inch
Weather Strips per Panel	5	3	1
Hinges	Hidden	Exposed	Hidden
Handle Type	Flush	Exposed	Flush
Ramp Option	Yes	Yes	No
Hardware Durability	Medium Duty	Heavy Duty	Normal Duty
Glass Customization	Yes	Yes	Yes
Panel Minimum	2 Panels	3 Panels	2 Panels
Screen Add-On	Yes	Yes	Yes
Design	Super Slim Design	Heavy Duty Design	Clean Design
Most Popular For	Homeowners/Contractors	Homeowners	Budget Buyers
Insulation Level	High	High	Moderate
Thermal Broken	Yes	Yes	Yes
Corner Option	Yes	No	Yes
Low Track	Not Thermal Broken	Not Thermal Broken	Not Thermal Broken
High Track	Thermal Broken	Thermal Broken	Thermal Broken

Glass Options

-Clear Glass (1/4" - 5mm)

Clear glass offers transparency and excellent visibility, allowing natural light to flood interior spaces.

-Insulation Glass (Online) (1/4" - 5mm)

This glass integrates low emissivity (low-e) properties directly into its composition, enhancing performance and durability. It provides superior thermal insulation benefits.

-Low-E 2 Glass (Offline) (1/4" - 5mm)

TEZA's Low-E3 Glass is designed to reject solar heat while maintaining visibility and offering exceptional fading protection. It adapts to various climates and blocks 85% of harmful UV rays.

-Low-E 4 Glass (Offline) (1/4" - 5mm)

TEZA Low-E4 Glass offers enhanced light transmittance combined with superior solar control. It reflects heat back into the home in winter and blocks 90% of solar heat. It includes 20% more tint visibility than standard glass.

-Triple Panel Glass (1/4" - 5mm)

Each pane of glass is separated by an air gap, enhancing sound absorption and blocking sound transmission. This design reduces outside noise infiltration into interior spaces.

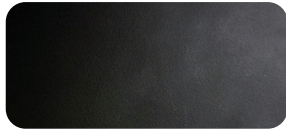
Glass Type	U-Factor How well a product prevents heat from escaping.	Solar Heat Gain Coefficient How well a product blocks heat caused by sunlight.	Visible Light Transmittance How much visible light comes through a product.	UV Protection How well a product blocks ultraviolet rays.
Insulation Glass (Online)	★★★★☆	★★★★☆	★★★★☆	★★★★☆
Low-E 2 Glass (Offline)	★★★★☆	★★★★☆	★★★★☆	★★★★☆
Low-E 4 Glass (Offline)	★★★★★	★★★★☆	★★★★☆	★★★★☆
Triple Panel Glass	★★★★★	★★★★★	★★★★★	★★★★★

Dual Insulating Glass Construction	STC	OITC*	Frequency (Hz)															
			100	125	160	200	250	315	400	500	630	800	1000	1250	1600	2000	2500	3150
			Sound Transmission Loss (dB)															
1" overall- ¼", glass, ½", airspace, ¼" glass	35	30	27	24	29	22	22	25	30	33	35	35	38	40	42	37	37	43
1" overall- ¼", glass, ½", airspace, ¼" glass	38	31	27	23	28	21	27	29	34	35	37	37	41	43	45	44	39	46
Triple Insulating Glass Construction	STC	OITC*	Frequency (Hz)															
			100	125	160	200	250	315	400	500	630	800	1000	1250	1600	2000	2500	3150
			Sound Transmission Loss (dB)															
1- ¾" overall - ¼" glass, ½" airspace, ¼" glass, ½" airspace, ¼" glass	39	31	25	22	29	24	25	29	34	37	40	40	43	46	48	47	41	47
2- ¾" overall - 3/8" glass, ¾" airspace, 5/16", glass ¾" airspace, 1/4" glass, 0.60" PVB, ¼" glass	45	35	33	30	34	37	39	43	44	45	46	46	43	41	43	49	55	57

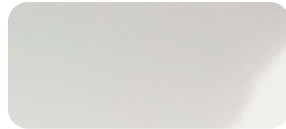
Finishes and Colors

Our finishes are available in standard and custom designer options, with the ability to match nearly any color. Our standard finishes include powder-coated matte black and matte white, both featuring a Class 1 coating thickness for superior smoothness and durability. Any other colors are considered custom options, featuring a high-quality paint finish that meets the AAMA-2605 rating, the highest standard for organic finishes.

Color Choice



Matte Black



Matte White



White Oak



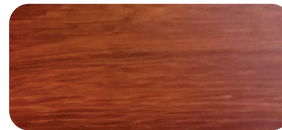
Cartier Silver



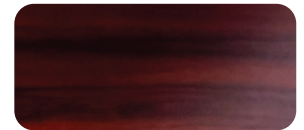
Ash



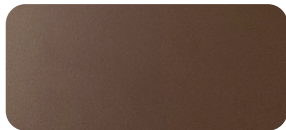
**Hainan Scented
Rosewood**



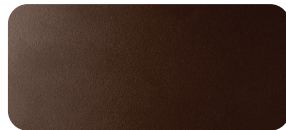
Gold Oak



Walnut Wood



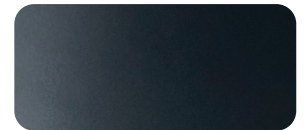
Mocha Coffee



Cartier Dark Coffee



Indians Red Oak

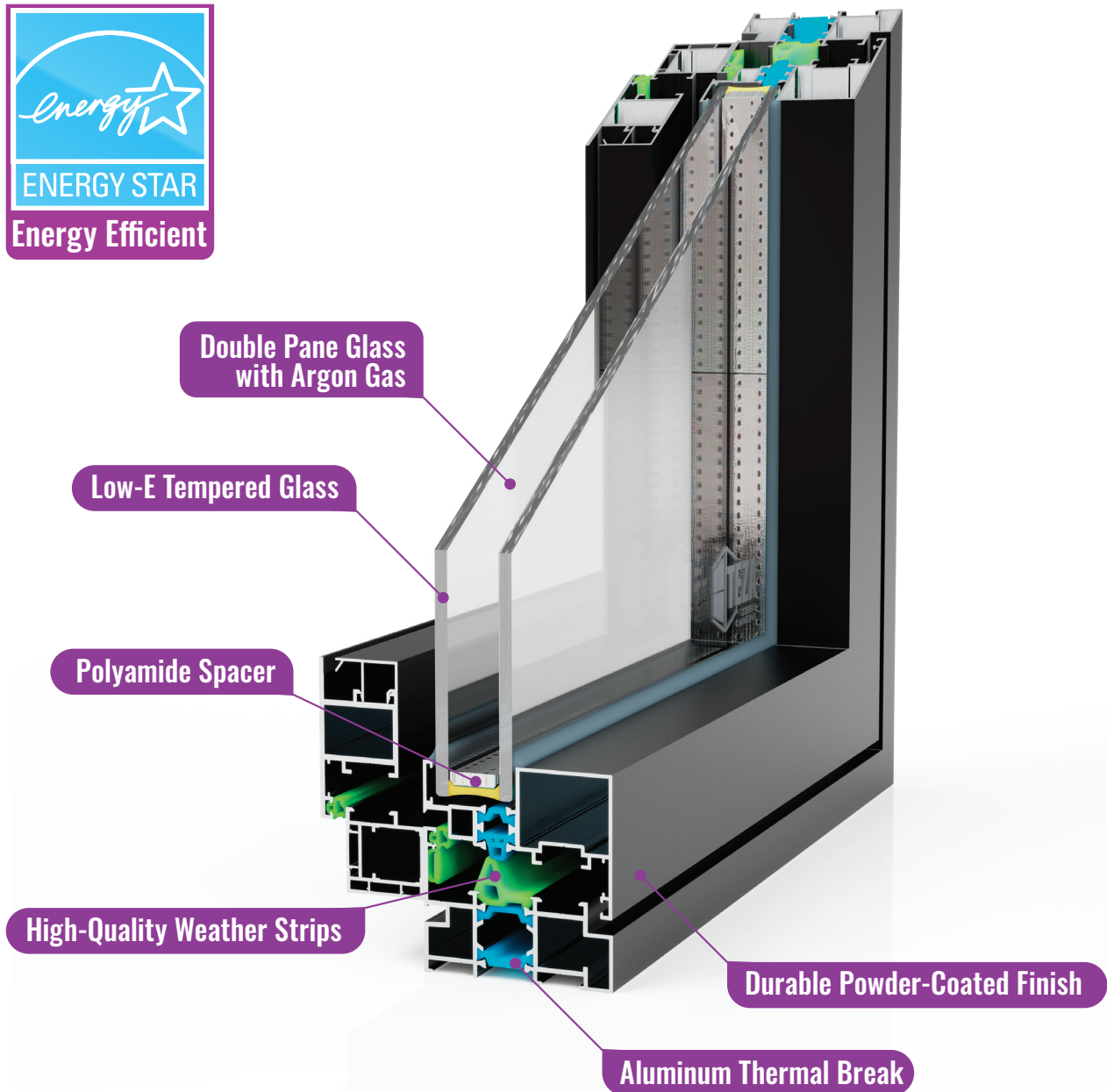


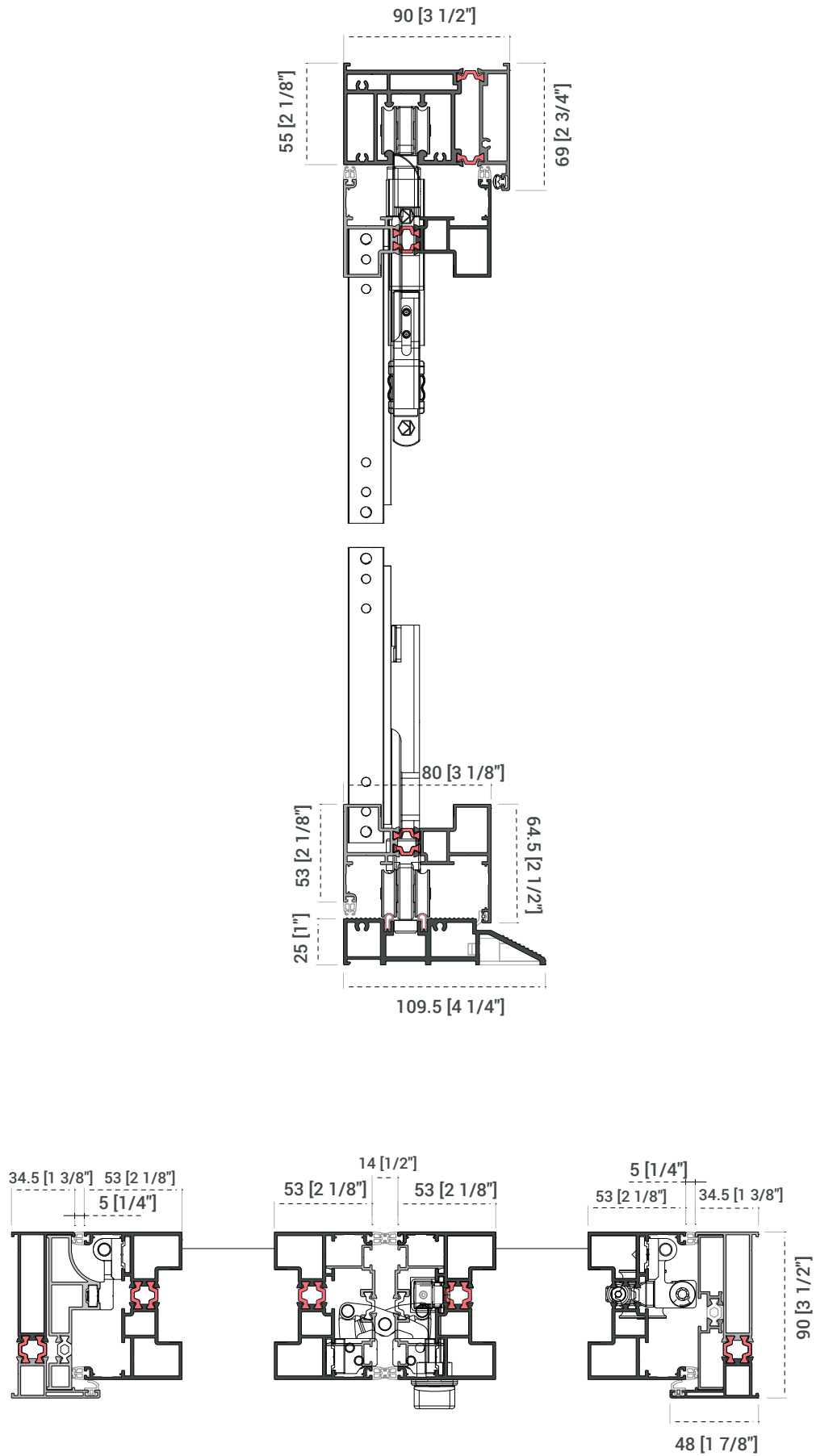
Ferrero Gray

Grille Options

Sizes	10mm*15.6mm, 35mm*24.5mm, 14.8mm*26mm, 12mm*20mm, 10mm*19mm, 10mm*15mm
Style	Full Divided Light, Simulated Divided Light, Convenient Cleaning Options
Permanent Exterior Permanent Interior with Spacer	Full Divided Light An authentic look with full divided light grilles that are permanently applied to the interior and exterior of your patio door with spacer between the glass.
Permanent Exterior Permanent Interior	Simulated Divided Light Simulated divided light offers permanent grilles on the exterior and interior with no spacer between the glass.
Permanent Exterior Removable Interior	
Removable Interior Grille	Convenient Cleaning Options Removable interior grilles are easy to detach for cleaning. They are installed between the glass panels and come with a contoured profile of either 1" or ¾".
FineLight Grilles Between the Glass	

89 Series Highlights

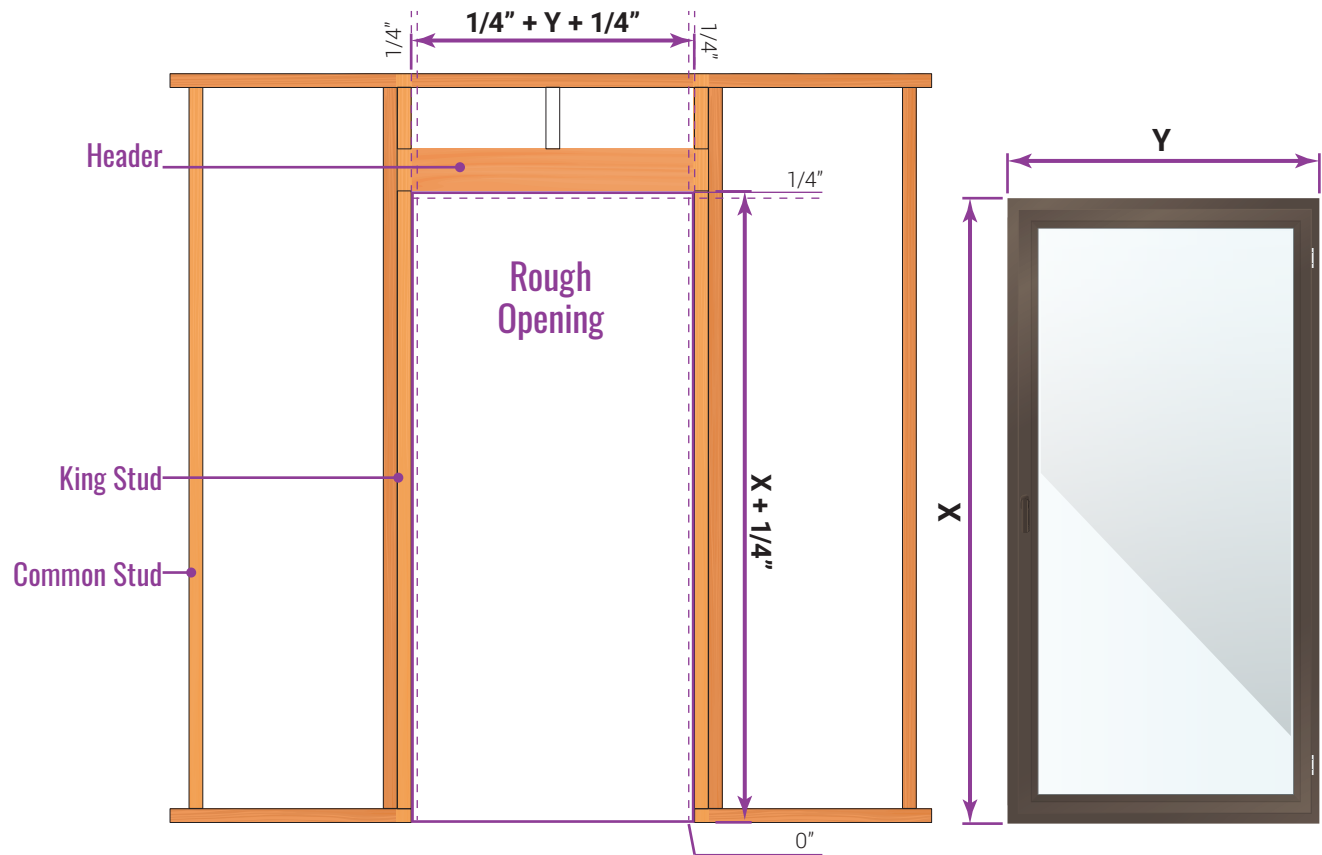




Measurements and Rough Opening

TEZA products sizes its products from the frame to frame. The sizes on the invoice will be exact sizes of products. For rough opening requires 1/4" to each side (left, right and top).

Installation is the sole responsibility of the home owner, distributor user contractor, or their representative.



Notes

- For rough opening size, allow a minimum 1/4" gap between the Door and rough opening.
- All dimensions are in mm and inches.
- All dimensions are to be checked on site.
- Any discrepancy between the architectural drawing and other drawings relevant for construction should be notified before commencement.
- Sill pans are required by code for doors and windows.



TEZA's aluminum products are exceptionally recyclable. In fact, aluminum is one of the most recyclable materials on the planet, capable of being recycled repeatedly without losing its quality or integrity.



(818)818-6001



sales@Tezadoors.com



www.Tezadoors.com



4943 Telegraph Rd
Los Angeles, CA 90022